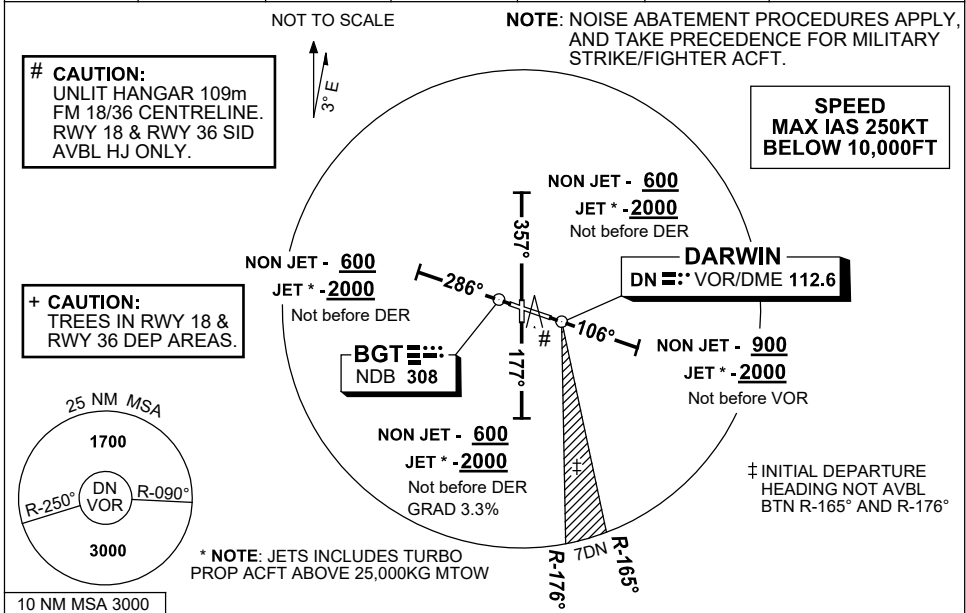


**STANDARD INSTRUMENT DEPARTURES (SID)
DARWIN SEVEN DEPARTURE (RADAR)
DARWIN, NT (YPDN)**

1 DEC 2022

ATIS 128.25 308 316.2	ACD 126.8	SMC 121.8	TWR 133.1	APP-E 125.2 APP-W 134.1	DEP 123.0	Bearings are Magnetic Elevations in FEET AMSL
------------------------------------	---------------------	---------------------	---------------------	--	---------------------	--



DARWIN SEVEN DEPARTURE (RADAR)

RWY 11

- Track 106°
- AT or ABV 900ft (**2000ft JET ACFT ***) but not before VOR, turn to assigned heading or track
- When instructed, contact Approach for Radar Vectors

RWY 18 (HJ ONLY)

- # TAKEOFF MINIMA REQUIREMENTS
CEILING 50ft VIS 1000m
or
AIP ENR 1.5 Para 4.3
WHICHEVER IS GREATER**
- Track 177°
 - AT or ABV 600ft (**2000ft JET ACFT ***) but not before DER, turn to assigned heading or track
 - When instructed, contact Approach for Radar Vectors

RWY 29

- Track 286°
- AT or ABV 600ft (**2000ft JET ACFT ***) but not before DER, turn to assigned heading or track
- When instructed, contact Approach for Radar Vectors

RWY 36 (HJ ONLY)

- # TAKEOFF MINIMA REQUIREMENTS
CEILING 50ft VIS 700m
or
AIP ENR 1.5 Para 4.3
WHICHEVER IS GREATER**
- Track 357°
 - AT or ABV 600ft (**2000ft JET ACFT ***) but not before DER, turn to assigned heading or track
 - When instructed, contact Approach for Radar Vectors

COMMUNICATIONS FAILURE PROCEDURE

On recognition of communication failure

- Squawk 7600
- Maintain last assigned vector for two minutes, and
- CLIMB IF NECESSARY TO MINIMUM SAFE ALTITUDE, to maintain terrain clearance, then
- proceed in accordance with the latest ATC route clearance acknowledged.

Changes: MAG VAR.

PDNDP01-173