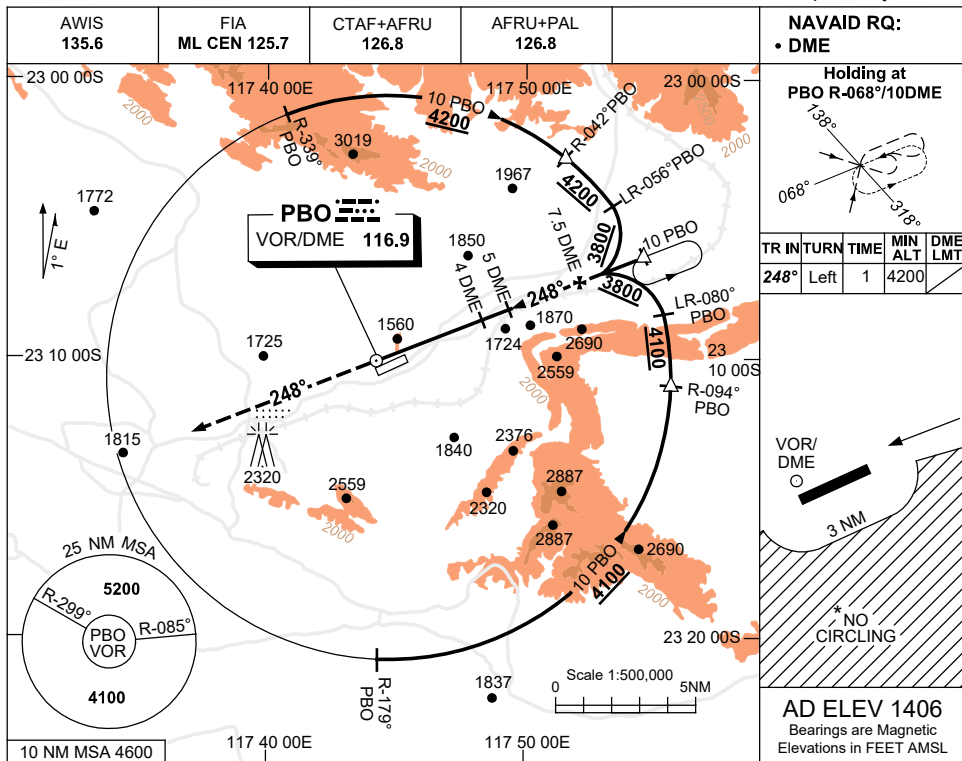


USE QNH

VOR RWY 24
PARABURDOO, WA (YPBO)

23 MAR 2023



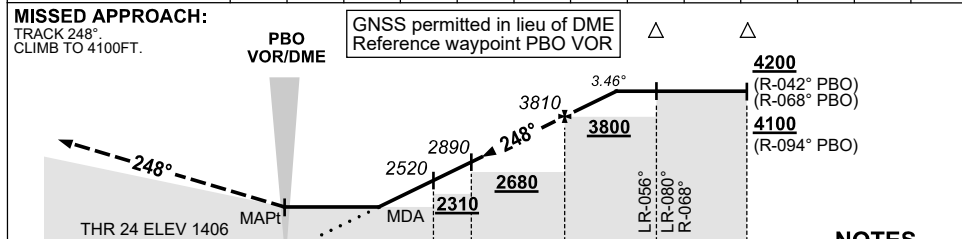
NAVAID RQ:
 • DME

Holding at PBO R-068°/10DME

TR IN	TURN	TIME	MIN ALT	DME LMT
248°	Left	1	4200	

AD ELEV 1406
 Bearings are Magnetic
 Elevations in FEET AMSL

DIST BY DME	2.9	3	4	5	6	7	7.5	8	8.6				
ALT (3.46° APCH PATH)	2100	2150	2520	2890	3260	3620	3810	3990	4200				



CATEGORY	A	B	C	D
S-I VOR/DME	2100 (694-3.5)			
CIRCLING*	2340 (934-2.4)	2500 (1094-4.0)	2570 (1164-5.0)	
ALTERNATE	(1434-4.4)	(1594-6.0)	(1664-7.0)	

- MAX IAS:
 HOLDING: 210KT.
 INITIAL : 210KT.
- NO CIRCLING S OF RWY 06/24 BEYOND 3NM.
- APCH PATH ANGLE DOES NOT COINCIDE WITH PAPl ON GLIDE SLOPE INDICATION.
- COLOUR: SEE SPEC NOTICES.

Changes: UNICOM REMOVED.

PBOV002-174