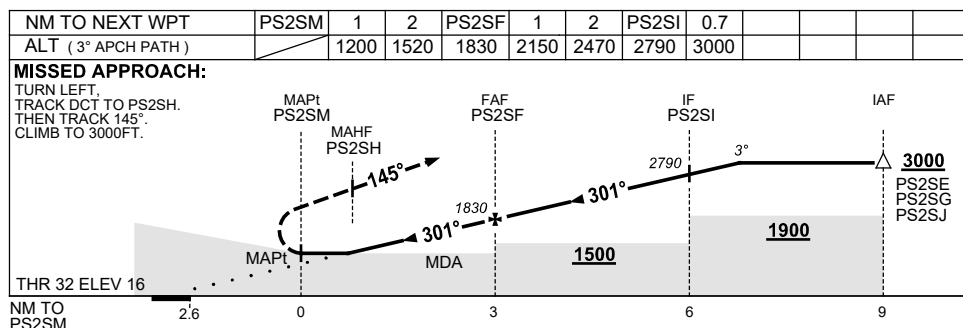
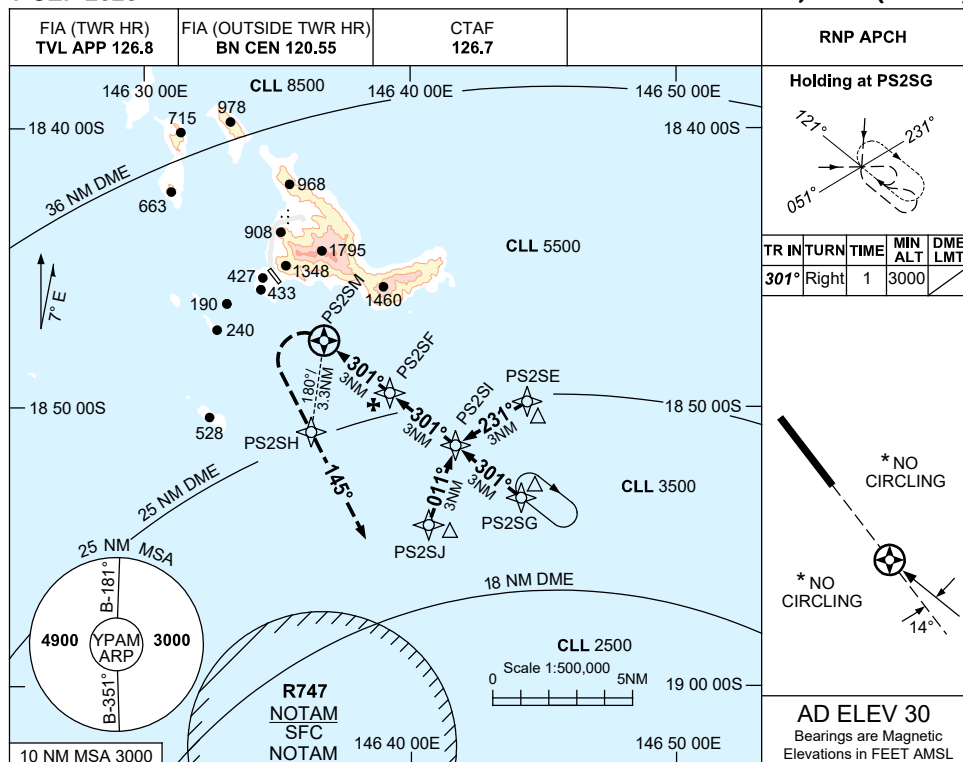


USE QNH

RNP Y RWY 32

7 SEP 2023

PALM ISLAND, QLD (YPAM)

**NOTES**

- * 1. NO CIRCLING OR VAA-H AVBL.
2. COLOUR: SEE SPEC NOTICES.

CATEGORY	H
LNAV	870 (854-5.0)
CIRCLING *	NOT APPLICABLE
ALTERNATE	NOT APPLICABLE

Changes: MSA, WPT NAMING CONVENTION, MINIMA, GRID COORD FORMAT, Editorial.

PAMGN03-176