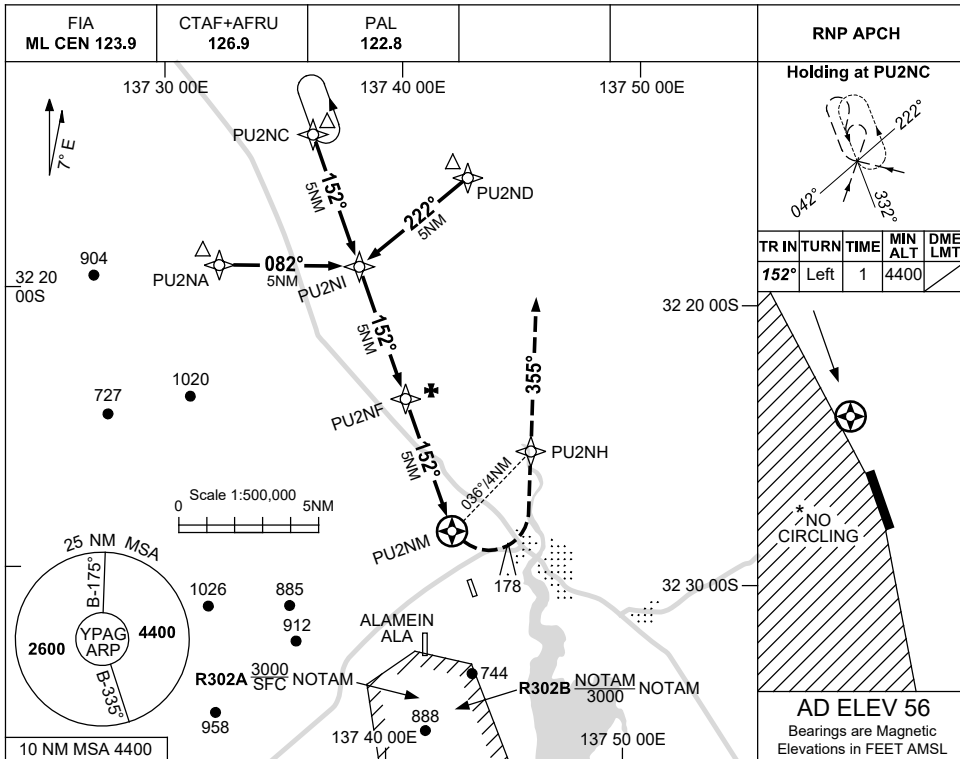


USE QNH

RNP RWY 15

1 DEC 2022

PORT AUGUSTA, SA (YPAG)



NM TO NEXT WPT	1.9	1	PU2NI	4	3	2	1	PU2NF	4	3	2	1	PU2NM
ALT (3° APCH PATH)	4400	4110	3790	3470	3150	2830	2520	2200	1880	1560	1240	920	600

NM TO	15	10	5	0	1.6
IAF	PU2NC	IF	PU2NF	MAPt	MAPt
Altitudes	4400	3790	2200	MDA	THR 15 ELEV 56

MISSED APPROACH: TURN LEFT, TRACK DCT TO PU2NH, THEN TRACK 355°, CLIMB TO 4400FT.

CATEGORY	A	B	C	D
LNAV	600 (544-3.1)			NOT APPLICABLE
CIRCLING*	780 (724-2.4)	1070 (1014-4.0)		
ALTERNATE	(1224-4.4)		(1514-6.0)	

NOTES

- MAX IAS: INITIAL : 230KT, MAP TURN: 180KT.
- NO CIRCLING WEST OF RWY 15/33.
- CAUTION:** ALAMEIN ALA 2.2 NM SSW OF AD.
- AWIS(PHONE) 08 8150 3814

Changes: CHART TITLE, PBN SPECIFICATION BOX.

PAGGN01-173