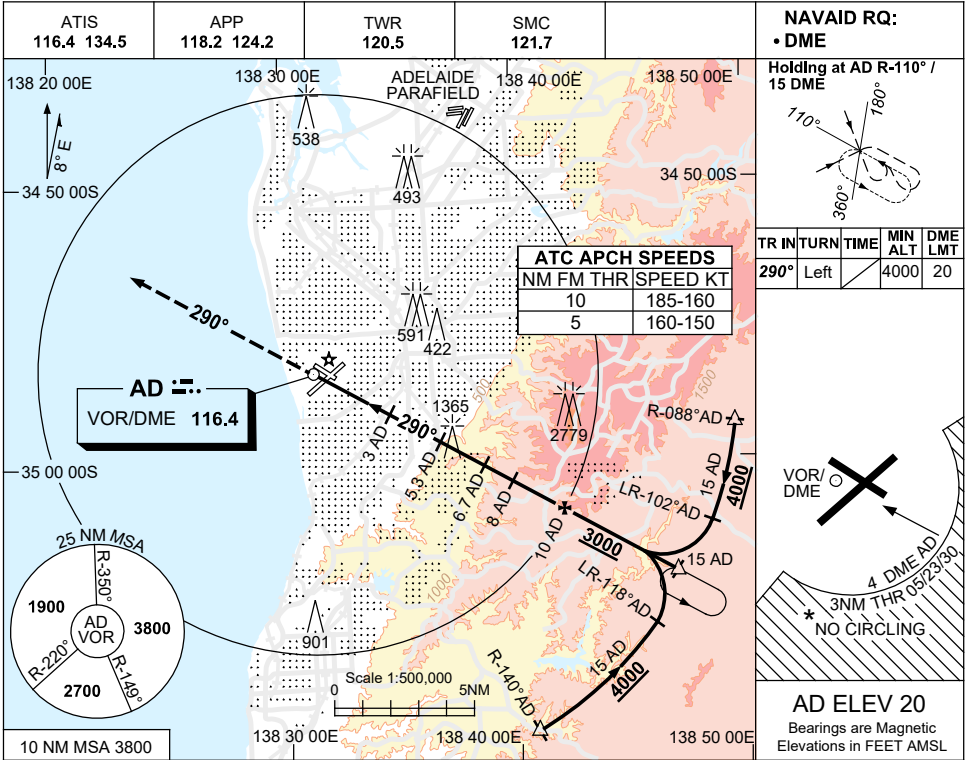


USE QNH

VOR RWY 30  
ADELAIDE, SA (YPAD)

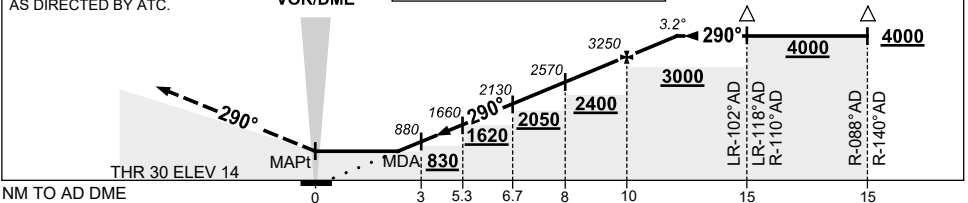
24 MAR 2022



DIST TO AD DME	2	3	4	5.3	6	6.7	7	8	9	10	11	12	12.2
ALT (3.2° APCH PATH)	520	880	1220	1660	1890	2130	2230	2570	2910	3250	3590	3930	4000

**MISSED APPROACH:**  
AT AD VOR TRACK 290°. CLIMB TO 3000FT OR AS DIRECTED BY ATC.

GNSS permitted in lieu of DME  
Reference waypoint AD VOR



**NOTES**

- \* 1. NO CIRCLING S OF RWY 05/23 BEYOND 4 DME AD OR BEYOND 3NM FM THR 05/23/30.
- \* 2. SPECIAL ALTN MNM 850/4.0 KM.
- 3. APCH PATH ANGLE DOES NOT COINCIDE WITH PAPI ON GLIDE SLOPE INDICATION.
- 4. COLOUR: SEE SPEC NOTICES.

CATEGORY	A	B	C	D
S-I VOR/DME	520 (500-2.7)			
CIRCLING *	900 (880-2.4)		1000 (980-4.0)	1000 (980-5.0)
ALTERNATE*	(1380-4.4)		(1480-6.0)	(1480-7.0)

Changes: HOLDING TEXT.

PADVO05-170