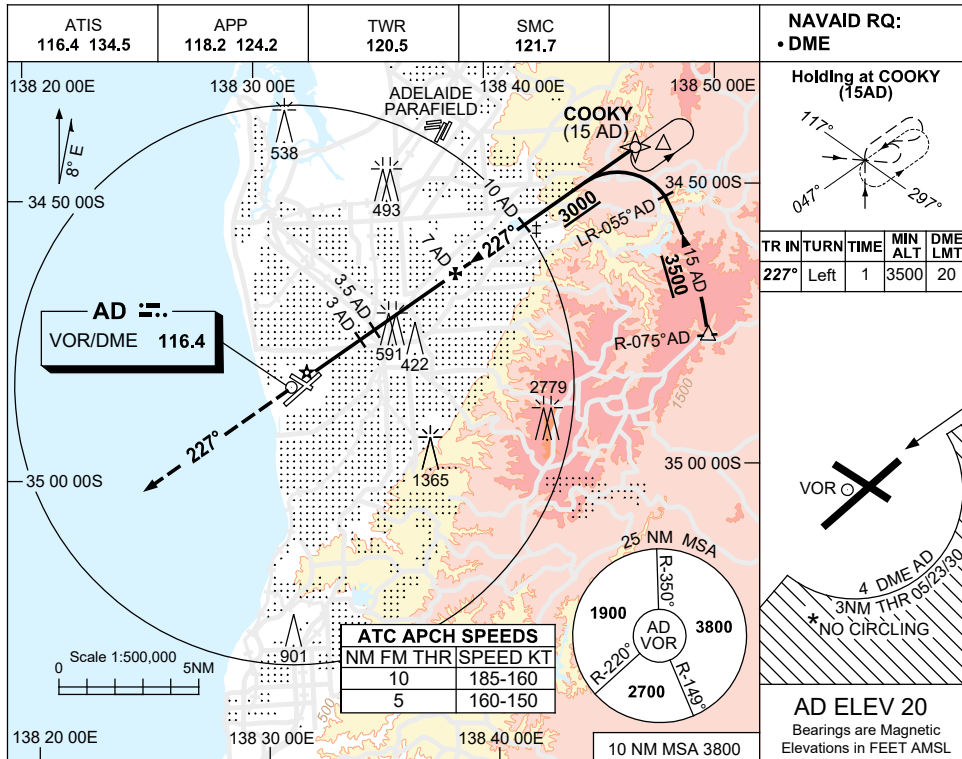


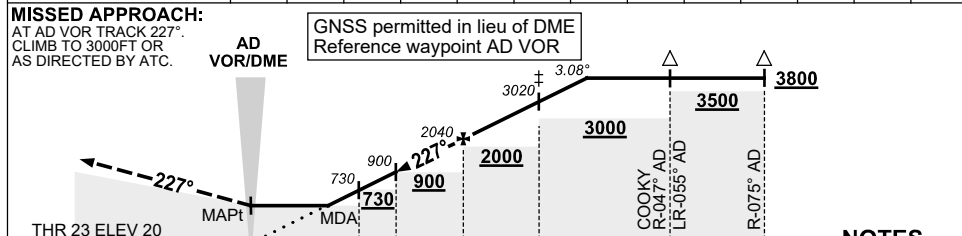
USE QNH

VOR RWY 23
ADELAIDE, SA (YPAD)

1 DEC 2022



DIST TO AD DME	2.5	3	3.5	4	5	6	7	8	9	10	11	12	12.4
ALT (3.08° APCH PATH)	580	730	900	1060	1390	1710	2040	2370	2690	3020	3350	3670	3800



- NOTES**
- *1. NO CIRCLING S OF RWY 05/23 BEYOND 4 DME AD OR BEYOND 3NM FM THR 05/23/30.
 - **2. SPECIAL ALTN MNM 850/4.0KM.
 - ‡3. ACFT MAY BE RADAR VECTORED TO 10 DME FINAL.
 - 4. APCH PATH ANGLE DOES NOT COINCIDE WITH PAPI ON GLIDE SLOPE INDICATION.
 - 5. COLOUR: SEE SPEC NOTICES.

CATEGORY	A	B	C	D
S-I VOR/DME	580 (560-2.3)			
CIRCLING *	900 (880-2.4)	1000 (980-4.0)	1000 (980-5.0)	
ALTERNATE**	(1380-4.4)	(1480-6.0)	(1480-7.0)	

Changes: SDF 3 AD, VIS.

PADVO04-173