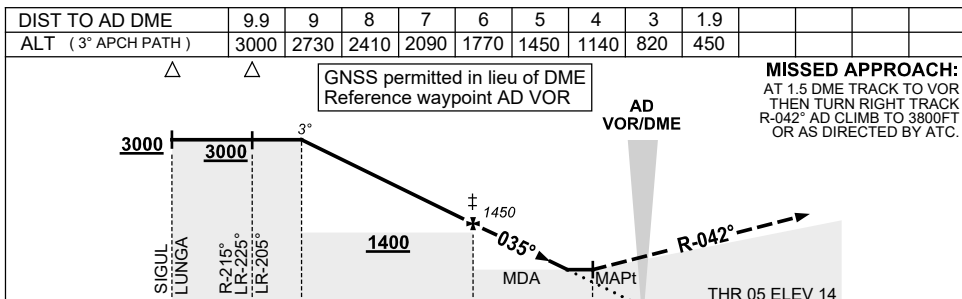
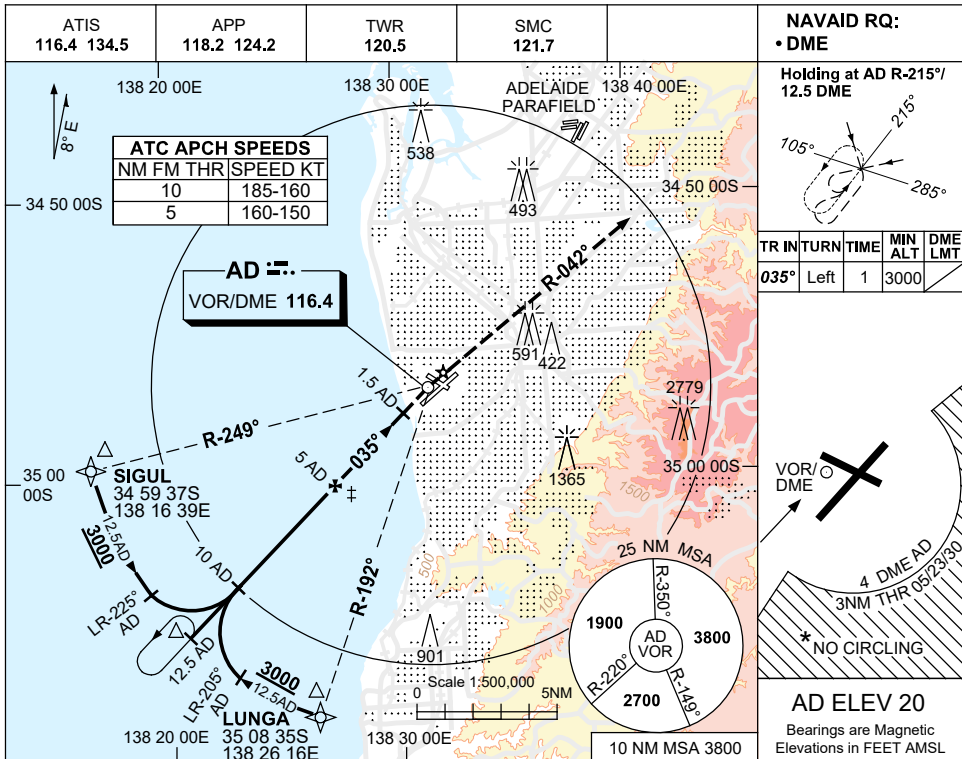


USE QNH

VOR RWY 05
ADELAIDE, SA (YPAD)

25 MAR 2021



CATEGORY	A	B	C	D
S-I VOR/DME	450 (430-2.4)			
CIRCLING *	900 (880-2.4)		1000 (980-4.0)	
ALTERNATE*	(1380-4.4)		(1480-6.0)	

* 1. NO CIRCLING BEYOND 4 DME AD SOUTH OF RWY 05/23 OR BEYOND 3NM FM THR 05/23/30.
 * 2. SPECIAL ALTN MNM 850/4.0 KM.
 * 3. ACFT MAY BE RADAR VECTORED TO FNA.
 * 4. COLOUR: SEE SPEC NOTICES.

Changes: COORD FMT, Editorial.

PADVO01-166