

**STANDARD INSTRUMENT ARRIVAL (STAR)  
RIKAB EIGHT VICTOR ARRIVAL (RNAV)  
ADELAIDE, SA (YPAD)**

17 JUN 2021

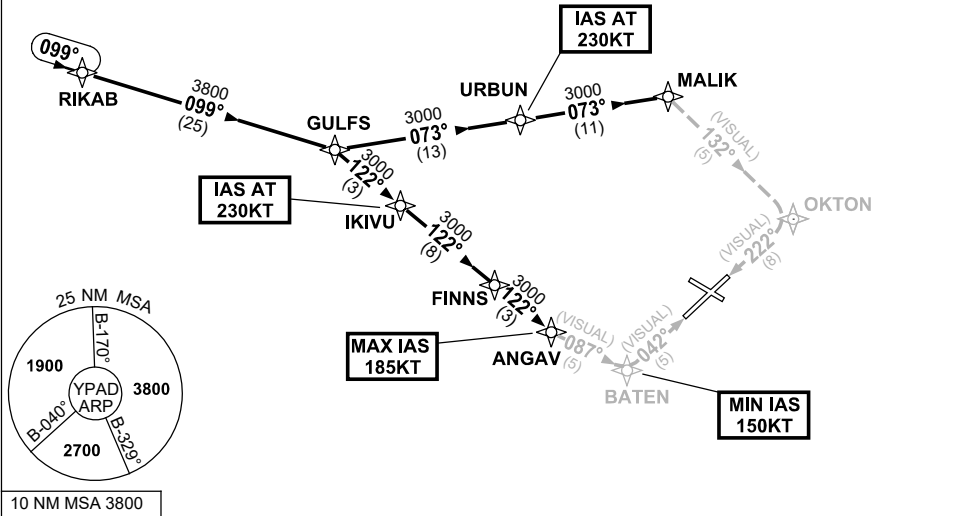
ATIS 116.4 134.5	APP 124.2	TWR 120.5	SMC 121.7	Bearings are Magnetic Elevations in FEET AMSL
---------------------	--------------	--------------	--------------	--

NOT TO SCALE



ATC APCH SPEEDS	
NM FM TD	SPEED KT
RWY 05 ANGAV	185 -160
RWY 05 BATEN	160 -150
RWY 23 10NM	185 -160
RWY 23 5NM	160 -150

**SPEED  
MAX IAS 250KT  
BELOW 10,000FT**



**ARRIVAL: RIKAB EIGHT**

**RWY 05 VICTOR:**

- Track 099° to GULFS
- Turn RIGHT, track 122° to IKIVU
- IAS AT 230KT from IKIVU
- Track 122° to FINNS
- Track 122° to ANGAV
- MAX IAS 185KT from ANGAV
- Turn LEFT, track 087° VISUAL to BATEN
- MIN IAS 150KT from BATEN
- Turn LEFT, Intercept VISUAL final RWY 05

**RWY 23 VICTOR: (HJ ONLY)**

- Track 099° to GULFS
- Turn LEFT, track 073° to URBUN
- IAS AT 230KT from URBUN
- Track 073° to MALIK
- Turn RIGHT, track 132° VISUAL to OKTON
- Turn RIGHT, Intercept VISUAL final RWY 23

**COMMUNICATIONS FAILURE: PROCEDURE IN IMC  
IF ABLE CTC AD APP 03-9235-2012**

- Squawk 7600, comply with vertical navigation requirements, but not below MSA.
- Track via the latest STAR clearance to the nominated runway, then fly the most suitable approach in accordance with ERSA EMERG Section 1.5.