

STANDARD INSTRUMENT ARRIVAL (STAR)
DRINA ONE VICTOR ARRIVAL (RNAV)
ADELAIDE, SA (YPAD)

28 NOV 2024

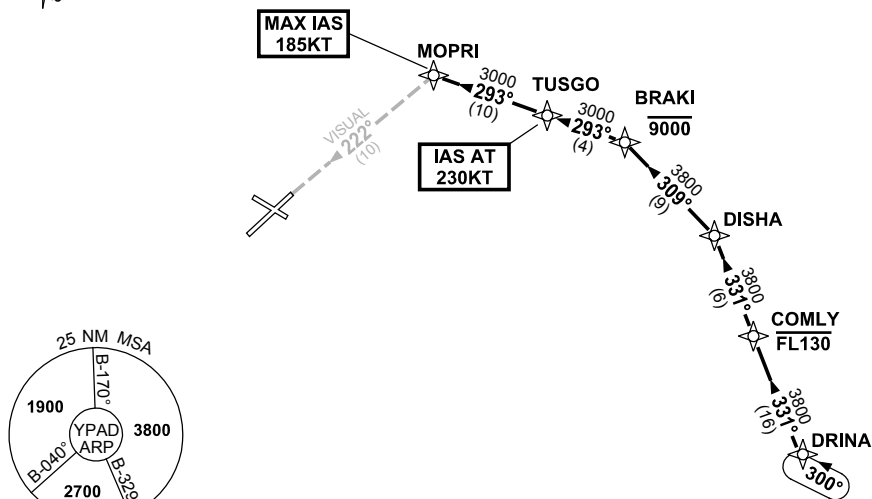
ATIS 116.4 134.5	APP 118.2	TWR 120.5	SMC 121.7	Bearings are Magnetic Elevations in FEET AMSL
---------------------	--------------	--------------	--------------	--

NOT TO SCALE



ATC APCH SPEEDS		
NM	FM	TD
MOPRI	185	-160
5	160	-150

SPEED
MAX IAS 250KT
BELOW 10,000ft



10 NM MSA 3800

ARRIVAL: DRINA ONE

RWY 23 VICTOR:

- From DRINA track 331° to COMLY **Cross** COMLY AT or BLW FL130
- Track 331° to DISHA
- Turn LEFT, track 309° to BRAKI **Cross** BRAKI AT or BLW 9000ft
- Turn LEFT, track 293° to TUSGO **IAS AT 230KT** from TUSGO
- Track 293° to MOPRI **MAX IAS 185KT** from MOPRI
- Turn LEFT, intercept VISUAL final RWY 23

COMMUNICATIONS FAILURE: PROCEDURE IN IMC
IF ABLE CTC AD APP 03-9235-2012

- Squawk 7600, comply with vertical navigation requirements, but not below MSA.
- Track via the latest STAR clearance to the nominated runway, then fly the most suitable approach in accordance with ERS A EMERG Section 1.5.

Changes: VALIDITY INDICATOR, Editorial.

PADSR28-181