

**STANDARD INSTRUMENT ARRIVAL (STAR)  
BLACK THREE VICTOR ARRIVAL (RNAV)  
ADELAIDE, SA (YPAD)**

17 JUN 2021

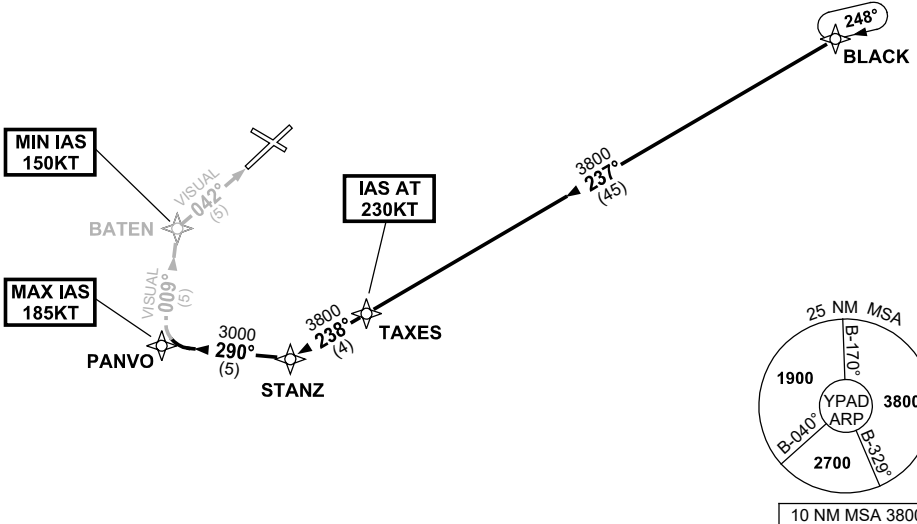
|                     |                   |              |  |
|---------------------|-------------------|--------------|--|
| ATIS<br>116.4 134.5 | APP (SE)<br>118.2 | TWR<br>120.5 | Bearings are Magnetic<br>Elevations in FEET AMSL |
|---------------------|-------------------|--------------|--|

NOT TO SCALE



| ATC APCH SPEEDS |          |
|-----------------|----------|
| NM FM TD        | SPEED KT |
| PANVO           | 185 -160 |
| BATEN           | 160 -150 |

|   |
|---|
| <b>SPEED</b><br><b>MAX IAS 250KT</b><br><b>BELOW 10,000FT</b> |
|---|



**ARRIVAL: BLACK THREE**

**RWY 05 VICTOR:**

- From BLACK track 237° to TAXES  
**IAS AT 230KT** from TAXES
- Track 238° to STANZ
- Turn RIGHT, track 290° to PANVO  
**MAX IAS 185KT** from PANVO
- Turn RIGHT, track 009° VISUAL to BATEN  
**MIN IAS 150KT** from BATEN
- Turn RIGHT, intercept VISUAL final RWY 05

**COMMUNICATIONS FAILURE: PROCEDURE IN IMC  
IF ABLE CTC AD APP 03-9235-2012**

- Squawk 7600, comply with vertical navigation requirements, but not below MSA.
- Track via the latest STAR clearance to the nominated runway, then fly the most suitable approach in accordance with ERSA EMERG Section 1.5.