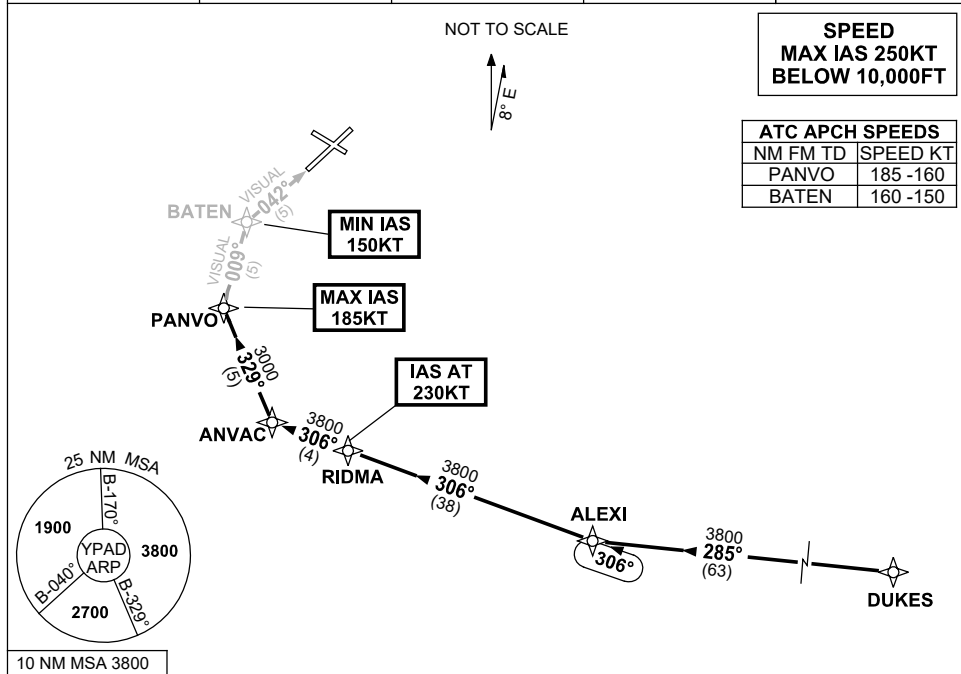


**STANDARD INSTRUMENT ARRIVAL (STAR)  
ALEXI THREE VICTOR ARRIVAL (RNAV)  
ADELAIDE, SA (YPAD)**

17 JUN 2021

ATIS 116.4 134.5	APP 118.2	TWR 120.5	SMC 121.7	Bearings are Magnetic Elevations in FEET AMSL
---------------------	--------------	--------------	--------------	--



**TRANSITION:**

**DUKES:** From DUKES track 285° to ALEXI  
Then follow ARRIVAL instructions

**ARRIVAL: ALEXI THREE**

**RWY 05 VICTOR:**

- From ALEXI turn RIGHT, track 306° to RIDMA  
**IAS AT 230KT** from RIDMA
- Track 306° to ANVAC
- Turn RIGHT, track 329° to PANVO  
**MAX IAS 185KT** from PANVO
- Turn RIGHT, track 009° VISUAL to BATEN  
**MIN IAS 150KT** from BATEN
- Turn RIGHT, Intercept VISUAL final RWY 05

**COMMUNICATIONS FAILURE: PROCEDURE IN IMC  
IF ABLE CTC AD APP 03-9235-2012**

- Squawk 7600, comply with vertical navigation requirements, but not below MSA.
- Track via the latest STAR clearance to the nominated runway, then fly the most suitable approach in accordance with ERSA EMERG Section 1.5.