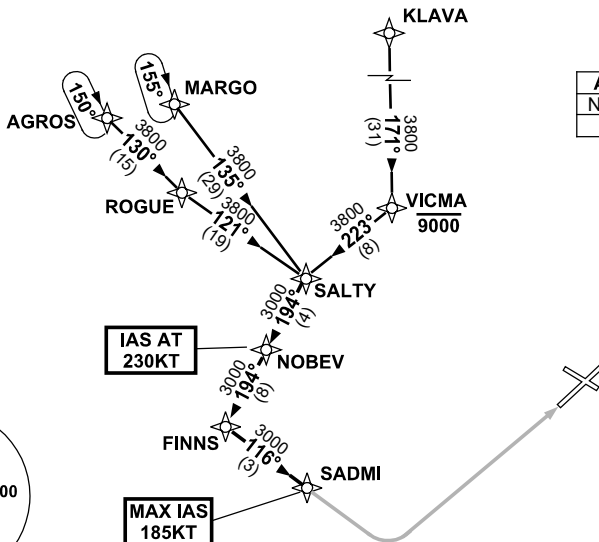


**STANDARD INSTRUMENT ARRIVAL (STAR)
SALTY THREE WHISKEY ARRIVAL (RNAV)
ADELAIDE, SA (YPAD)**

1 DEC 2022

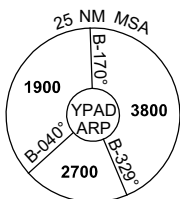
ATIS 116.4 134.5	APP 124.2	TWR 120.5	SMC 121.7	Bearings are Magnetic Elevations in FEET AMSL
---------------------	--------------	--------------	--------------	--

NOT TO SCALE



**SPEED
MAX IAS 250KT
BELOW 10,000FT**

ATC APCH SPEEDS			
NM	FM	TD	SPEED KT
SADMI			185 -160



10 NM MSA 3800

TRANSITIONS:

MARGO: From MARGO to SALTY:
Track 135° to SALTY
Then follow ARRIVAL instructions

KLAVA: From KLAVA to SALTY:
Track 171° to VICMA
Cross VICMA AT or BLW 9000FT
Turn RIGHT, track 223° to SALTY
Then follow ARRIVAL instructions

AGROS: From AGROS to SALTY:
Track 130° to ROGUE
Turn LEFT, track 121° to SALTY
Then follow ARRIVAL instructions

ARRIVAL: SALTY THREE

RWY 05 WHISKEY:

- From SALTY turn RIGHT, track 194° to NOBEV
IAS AT 230KT from NOBEV
- Track 194° to FINNS
- From FINNS turn LEFT, track 116° to SADMI
MAX IAS 185KT from SADMI
- Track via RNP W RWY 05 (AR)

**COMMUNICATIONS FAILURE: PROCEDURE IN IMC
IF ABLE CTC AD APP 03-9235-2012**

- Squawk 7600, comply with vertical navigation requirements, but not below MSA.
- Track via the latest STAR clearance to the nominated runway, then fly the most suitable approach in accordance with ERS A EMERG Section 1.5.