

**STANDARD INSTRUMENT ARRIVAL (STAR)  
ATPIP THREE ARRIVAL (NON-JET) (RNAV)  
ADELAIDE, SA (YPAD)**

17 JUN 2021

ATIS 116.4 134.5	APP 118.2	TWR 120.5	SMC 121.7	Bearings are Magnetic Elevations in FEET AMSL
---------------------	--------------	--------------	--------------	--

NOT TO SCALE

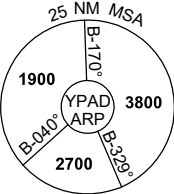


**ADELAIDE**  
AD VOR/DME 116.4

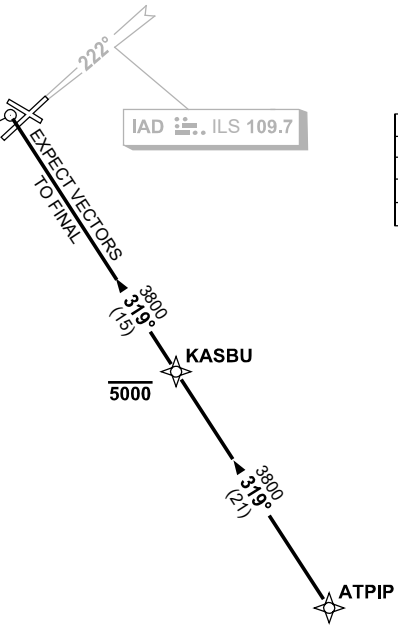
IAD ILS 109.7

**SPEED**  
MAX IAS 250KT  
BELOW 10,000FT

ATC APCH SPEEDS	
NM	SPEED KT
20	AT 230
10	185-160
5	160-150



10 NM MSA 3800



**ARRIVAL:** ATPIP THREE  
**ALL RWYS:** From ATPIP track 319° to KASBU  
**Cross** KASBU AT or BLW 5000FT  
 • Track 319° to AD VOR  
 Expect radar vectors to final approach

**COMMUNICATIONS FAILURE: PROCEDURE IN IMC  
IF ABLE CTC AD APP 03-9235-2012**

- Squawk 7600, comply with vertical navigation requirements, but not below MSA.
- Track via the latest STAR clearance to the nominated runway, then fly the most suitable approach in accordance with ERS A EMERG Section 1.5.