

**STANDARD INSTRUMENT ARRIVAL (STAR)  
ELROX FOUR VICTOR ARRIVAL (NON-JET) (RNAV)  
ADELAIDE, SA (YPAD)**

17 JUN 2021

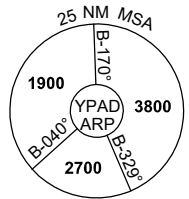
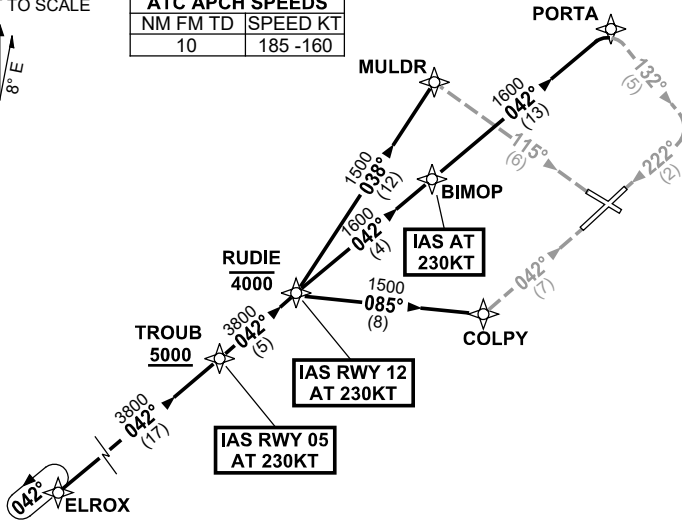
ATIS 116.4 134.5	APP 124.2	TWR 120.5	SMC 121.7	Bearings are Magnetic Elevations in FEET AMSL
---------------------	--------------	--------------	--------------	--

NOT TO SCALE



ATC APCH SPEEDS	
NM	FM TD SPEED KT
10	185 -160

**SPEED  
MAX IAS 250KT  
BELOW 10,000FT**



10 NM MSA 3800

**ARRIVAL:**

**ELROX FOUR**

From ELROX track 042° to TROUB  
**Cross** TROUB AT or ABV 5000FT, then

**RWY 05 VICTOR:**

**IAS AT 230KT** from TROUB  
From TROUB, track 042° to RUDIE  
**Cross** RUDIE AT or BLW 4000FT  
• Turn **RIGHT**, track 085° to COLPY  
• Turn **LEFT**, track 042° **VISUAL** for final RWY 05

**RWY 12 VICTOR:**

From TROUB, track 042° to RUDIE  
**Cross** RUDIE AT or BLW 4000FT  
**IAS AT 230KT** from RUDIE  
• Track 038° to MULDR  
• Turn **RIGHT**, track 115° **VISUAL** for final RWY 12

**RWY 23 VICTOR:**

From TROUB, track 042° to RUDIE  
**Cross** RUDIE AT or BLW 4000FT  
• Track 042° to BIMOP  
**IAS AT 230KT** from BIMOP  
• Track 042° to PORTA  
• Turn **RIGHT**, track 132° **VISUAL** to intercept final RWY 23

**NOTE:** When instrument APCH required, expect radar vectors after RUDIE to IAF for appropriate instrument APCH

**COMMUNICATIONS FAILURE: PROCEDURE IN IMC  
IF ABLE CTC AD APP 03-9235-2012**

- Squawk 7600, comply with vertical navigation requirements, but not below MSA.
- Track via the latest STAR clearance to the nominated runway, then fly the most suitable approach in accordance with ERSA EMERG Section 1.5.