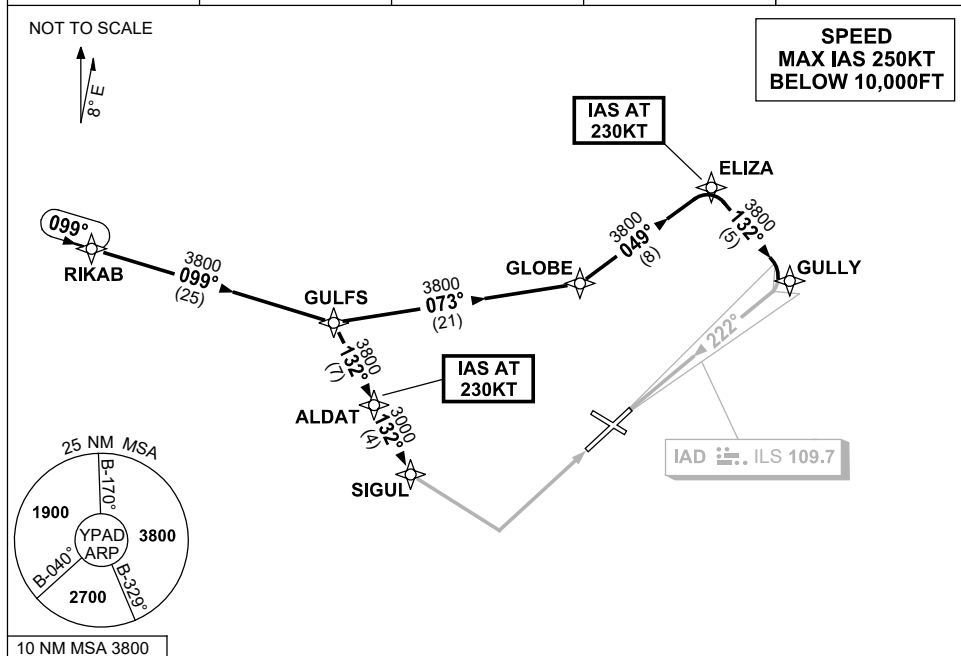


**STANDARD INSTRUMENT ARRIVAL (STAR)  
RIKAB EIGHT ALPHA, ZULU ARRIVALS (RNAV)  
ADELAIDE, SA (YPAD)**

1 DEC 2022

ATIS 116.4 134.5	APP 124.2	TWR 120.5	SMC 121.7	Bearings are Magnetic Elevations in FEET AMSL
---------------------	--------------	--------------	--------------	--



**ARRIVAL: RIKAB EIGHT**

**RWY 05 ZULU:**

- Track 099° to GULFS
- Turn RIGHT, track 132° to ALDAT
- **IAS AT 230KT** from ALDAT
- Track 132° to SIGUL
- Track via RNP Z RWY 05

**RWY 23 ALPHA:**

- Track 099° to GULFS
- Turn LEFT, track 073° to GLOBE
- Turn LEFT, track 049° to ELIZA
- **IAS AT 230KT** from ELIZA
- Turn RIGHT, track 132° to GULLY
- Turn RIGHT, intercept LOC RWY 23

**RWY 23 ZULU:**

- Track 099° to GULFS
- Turn LEFT, track 073° to GLOBE
- Turn LEFT, track 049° to ELIZA
- **IAS AT 230KT** from ELIZA
- Turn RIGHT, track 132° to GULLY
- Track via RNP RWY 23

**COMMUNICATIONS FAILURE: PROCEDURE IN IMC  
IF ABLE CTC AD APP 03-9235-2012**

- Squawk 7600, comply with vertical navigation requirements, but not below MSA.
- Track via the latest STAR clearance to the nominated runway, then fly the most suitable approach in accordance with ERSA EMERG Section 1.5.