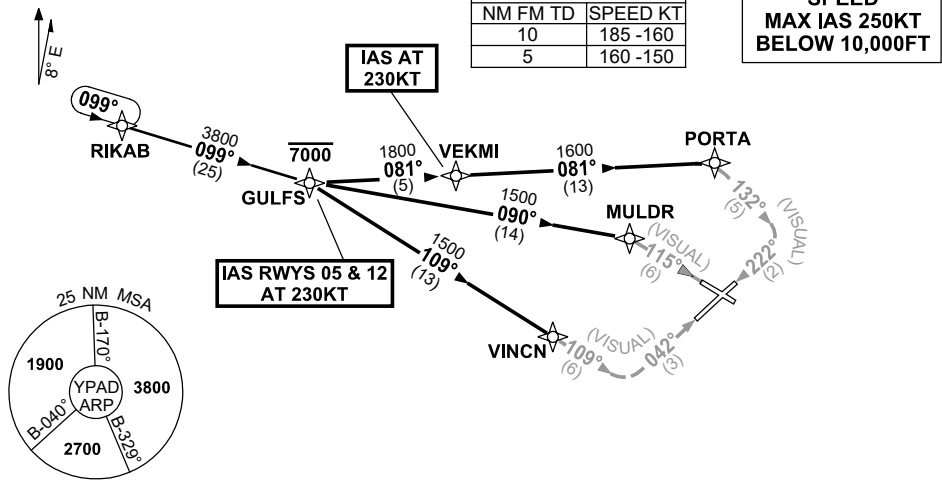


**STANDARD INSTRUMENT ARRIVAL (STAR)
GULFS SEVEN VICTOR ARRIVAL (NON-JET) (RNAV)
ADELAIDE, SA (YPAD)**

17 JUN 2021

| | | | | |
|---------------------|--------------|--------------|--------------|--|
| ATIS 116.4 134.5 | APP 124.2 | TWR 120.5 | SMC 121.7 | Bearings are Magnetic Elevations in FEET AMSL |
|---------------------|--------------|--------------|--------------|--|

NOT TO SCALE



TRANSITIONS:

RIKAB: **From RIKAB to GULFS**
Track 099° to GULFS
Then follow ARRIVAL instructions

ARRIVAL: **GULFS SEVEN**
Cross GULFS AT or BLW 7000FT

RWY 05 VICTOR: **IAS AT 230KT from GULFS**
From GULFS track 109° to VINCN
• Track 109° VISUAL to intercept final RWY 05

RWY 12 VICTOR: **IAS AT 230KT from GULFS**
From GULFS track 090° to MULDR
• Turn RIGHT, track 115° VISUAL for final RWY 12

RWY 23 VICTOR: From GULFS track 081° to VEKMI
IAS AT 230KT from VEKMI
• Track 081° to PORTA
• Turn RIGHT, track 132° VISUAL to intercept final RWY 23

NOTE: When instrument APCH required, expect radar vectors after GULFS to IAF for appropriate instrument APCH.

**COMMUNICATIONS FAILURE: PROCEDURE IN IMC
IF ABLE CTC AD APP 03-9235-2012**

- Squawk 7600, comply with vertical navigation requirements, but not below MSA.
- Track via the latest STAR clearance to the nominated runway, then fly the most suitable approach in accordance with ERS A EMERG Section 1.5.