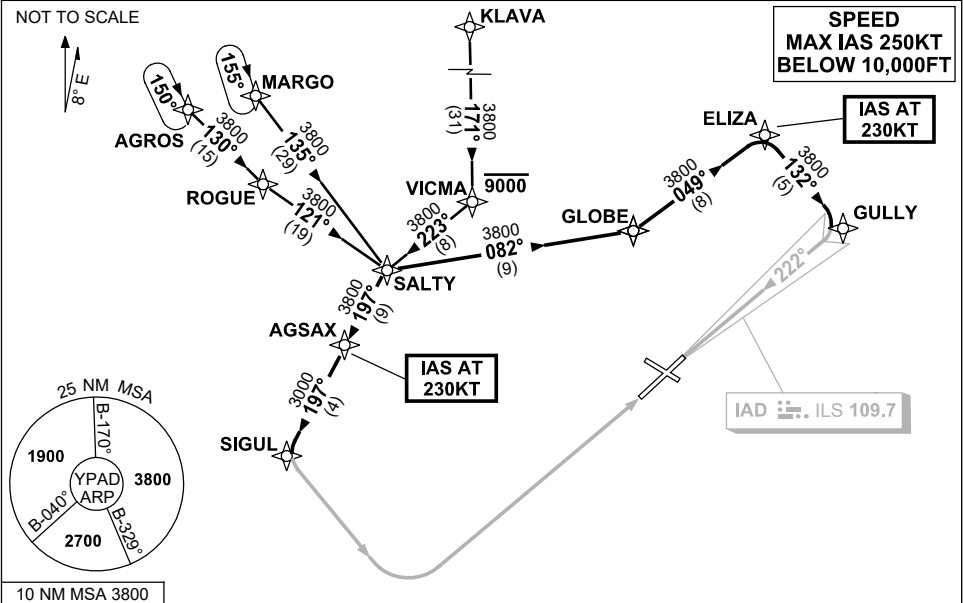


**STANDARD INSTRUMENT ARRIVAL (STAR)  
SALTY THREE ALPHA, ZULU ARRIVALS (RNAV)  
ADELAIDE, SA (YPAD)**

**1 DEC 2022**

ATIS 116.4 134.5	APP 124.2	TWR 120.5	SMC 121.7	Bearings are Magnetic Elevations in FEET AMSL
---------------------	--------------	--------------	--------------	--



**TRANSITIONS:**

**MARGO:** From MARGO to SALTY:  
Track 135° to SALTY  
Then follow ARRIVAL instructions

**AGROS:** From AGROS to SALTY:  
Track 130° to ROGUE  
Turn LEFT, track 121° to SALTY  
Then follow ARRIVAL instructions

**KLAVA:** From KLAVA to SALTY:  
(RWY 05 ONLY) Track 171° to VICMA  
Cross VICMA AT or BLW 9000FT  
Turn RIGHT, track 223° to SALTY  
Then follow ARRIVAL instructions

**ARRIVAL: SALTY THREE**

**RWY 05 ZULU:**

- From SALTY turn RIGHT, track 197° to AGSAX  
IAS AT 230KT from AGSAX
- Track 197° to SIGUL
- Track via RNP Z RWY 05

**RWY 23 ALPHA:**

- From SALTY turn LEFT, track 082° to GLOBE
- Turn LEFT, track 049° to ELIZA  
IAS AT 230KT from ELIZA
- Turn RIGHT, track 132° to GULLY
- Turn RIGHT, intercept LOC RWY 23

**COMMUNICATIONS FAILURE: PROCEDURE IN IMC  
IF ABLE CTC AD APP 03-9235-2012**

- Squawk 7600, comply with vertical navigation requirements, but not below MSA.
- Track via the latest STAR clearance to the nominated runway, then fly the most suitable approach in accordance with ERS A EMERG Section 1.5.

Changes: Editorial.

PADSR05-173