

**STANDARD INSTRUMENT ARRIVAL (STAR)  
BLACK THREE ALPHA, ZULU ARRIVALS (RNAV)  
ADELAIDE, SA (YPAD)**

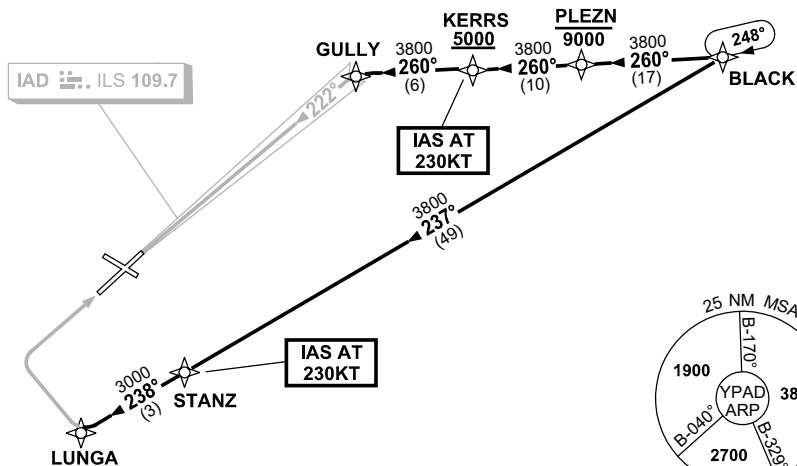
**1 DEC 2022**

ATIS 116.4 134.5	APP (SE) 118.2	TWR 120.5		Bearings are Magnetic Elevations in FEET AMSL
---------------------	-------------------	--------------	--	--

NOT TO SCALE



**SPEED  
MAX IAS 250KT  
BELOW 10,000FT**



**ARRIVAL: BLACK THREE**

**RWY 05 ZULU:**

- From BLACK track 237° to STANZ  
**IAS AT 230KT** from STANZ
- Track 238° to LUNGA
- Track via RNP Z RWY 05

**RWY 23 ALPHA:**

- From BLACK track 260° to PLEZN  
**Cross** PLEZN AT or BLW 9000FT
- Track 260° to KERRS  
**Cross** KERRS AT or ABV 5000FT  
**IAS AT 230KT** from KERRS
- Track 260° to GULLY
- Turn LEFT, intercept LOC RWY 23

**RWY 23 ZULU:**

- From BLACK track 260° to PLEZN  
**Cross** PLEZN AT or BLW 9000FT
- Track 260° to KERRS  
**Cross** KERRS AT or ABV 5000FT  
**IAS AT 230KT** from KERRS
- Track 260° to GULLY
- Track via RNP RWY 23

**COMMUNICATIONS FAILURE: PROCEDURE IN IMC  
IF ABLE CTC AD APP 03-9235-2012**

- Squawk 7600, comply with vertical navigation requirements, but not below MSA.
- Track via the latest STAR clearance to the nominated runway, then fly the most suitable approach in accordance with ERSA EMERG Section 1.5.