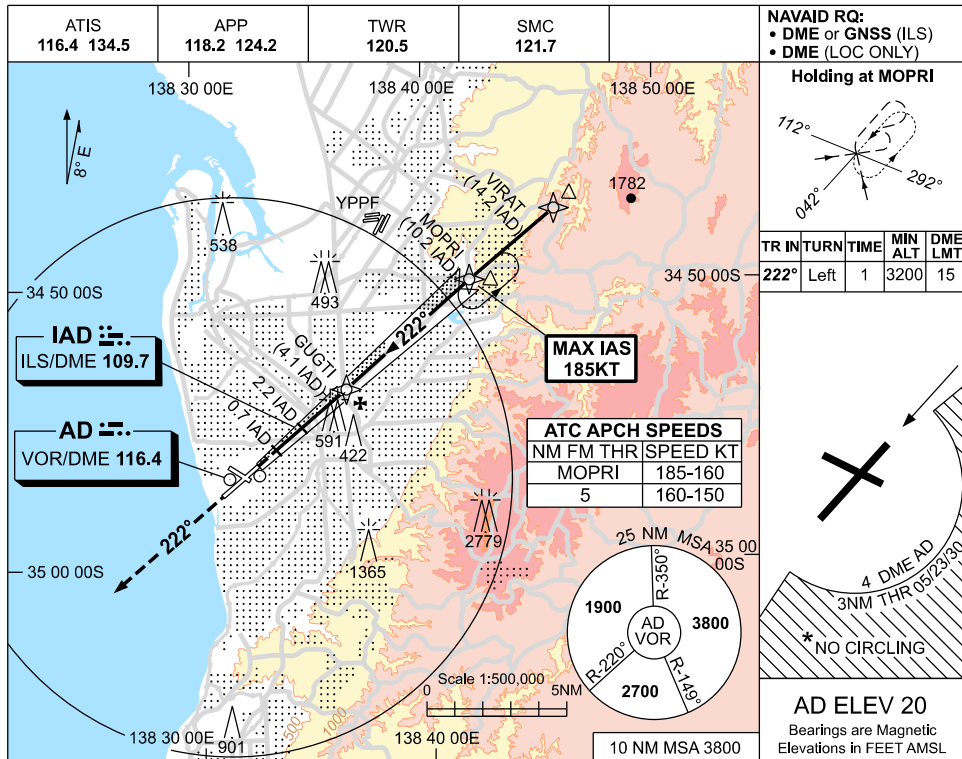


USE QNH

ILS-Z or LOC-Z RWY 23
ADELAIDE, SA (YPAD)

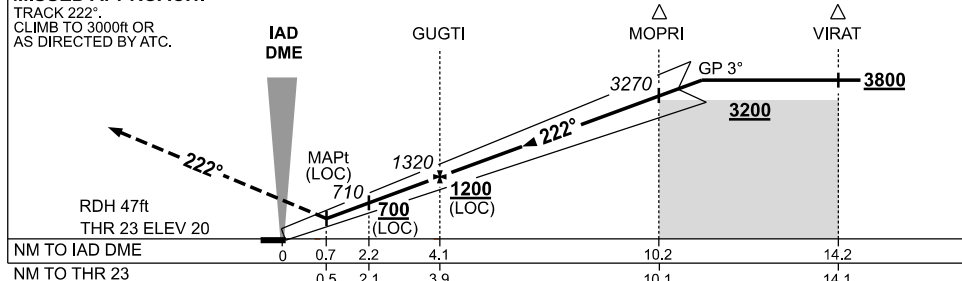
19 MAR 2026



NM TO IAD DME	1.6	2.2	3	4.1	5	6	7	8	9	10	10.2	11	11.9
ALT (3° APCH PATH)	520	710	970	1320	1600	1920	2240	2560	2880	3200	3270	3510	3800

MISSED APPROACH:

TRACK 222°. CLIMB TO 3000ft OR AS DIRECTED BY ATC.



NOTES

- MAX IAS: MOPRI : 185KT.
- NO CIRCLING S OF RWY 05 / 23 BEYOND 4 DME AD OR BEYOND 3NM FM THR 05/23/30.
- SPECIAL ALTN MNM 850/4.0KM.
- COLOUR: SEE SPEC NOTICES.

CATEGORY	A	B	C	D/DL
S-I ILS		270 (250) 0.8		
S-I LOC		520 (500-2.0)		
CIRCLING*	900 (880-2.4)		1000 (980-4.0)	1000 (980-5.0)
ALTERNATE *	(1380-4.4)		(1480-6.0)	(1480-7.0)

Changes: ABN DELETED, Editorial.

PADI02-186