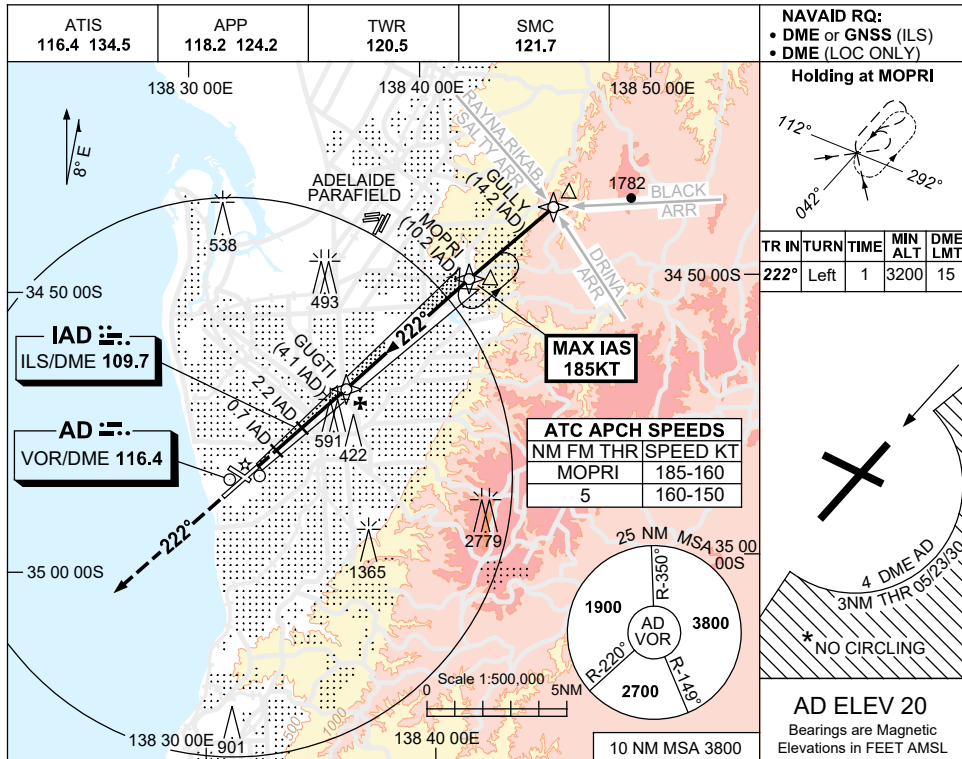


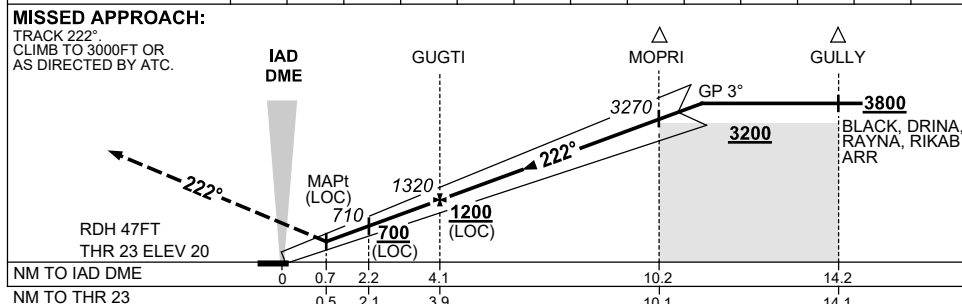
USE QNH

ILS-Z or LOC-Z RWY 23  
**ADELAIDE, SA (YPAD)**

1 DEC 2022



NM TO IAD DME	1.6	2.2	3	4.1	5	6	7	8	9	10	10.2	11	11.9
ALT (3° APCH PATH)	520	710	970	1320	1600	1920	2240	2560	2880	3200	3270	3510	3800



CATEGORY	A	B	C	D
S-I ILS		270 (250) 0.8		
S-I LOC		520 (500-2.0)		
CIRCLING*	900 (880-2.4)		1000 (980-4.0)	1000 (980-5.0)
ALTERNATE*	(1380-4.4)		(1480-6.0)	(1480-7.0)

- NOTES**
- MAX IAS: INITIAL : 185KT.
  - NO CIRCLING S OF RWY 05/23 BEYOND 4 DME AD OR BEYOND 3NM FM THR 05/23/30.
  - SPEC ALTN MNM 850/4.0KM.
  - COLOUR: SEE SPEC NOTICES.

Changes: VIS.

PADI02-173