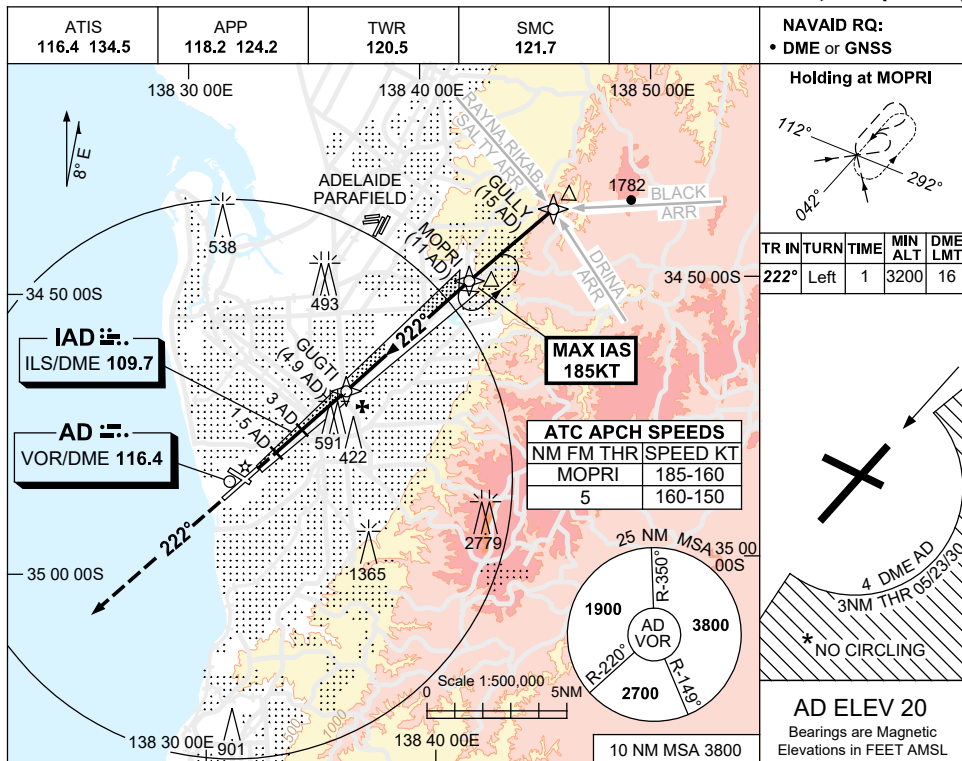


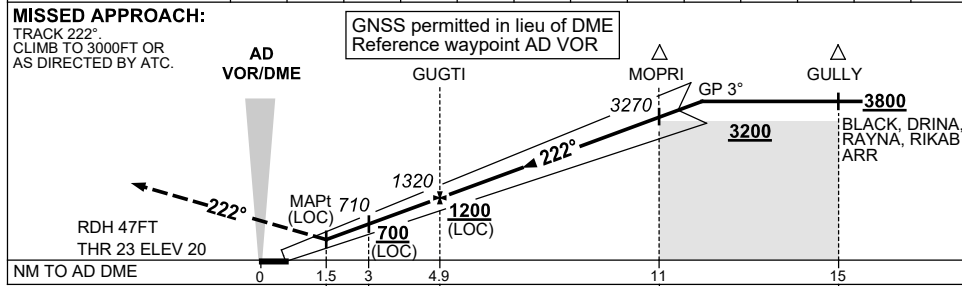
USE QNH

ILS-Y or LOC-Y RWY 23
ADELAIDE, SA (YPAD)

1 DEC 2022



NM TO AD DME	2.4	3	4	4.9	6	7	8	9	10	10.8	11	12	12.7
ALT (3° APCH PATH)	520	710	1030	1320	1670	1990	2310	2630	2940	3200	3270	3580	3800



NOTES

1. MAX IAS: INITIAL : 185KT.
- *2. NO CIRCLING S OF RWY 05/23 BEYOND 4 DME AD OR BEYOND 3NM FM THR 05/23/30.
- *3. SPECIAL ALTN MNM 850/4.0KM.
4. COLOUR: SEE SPEC NOTICES.

CATEGORY	A	B	C	D
S-I ILS		270 (250) 0.8		
S-I LOC		520 (500-2.0)		
CIRCLING*	900 (880-2.4)		1000 (980-4.0)	1000 (980-5.0)
ALTERNATE*	(1380-4.4)		(1480-6.0)	(1480-7.0)

Changes: VIS.

PADI01-173