

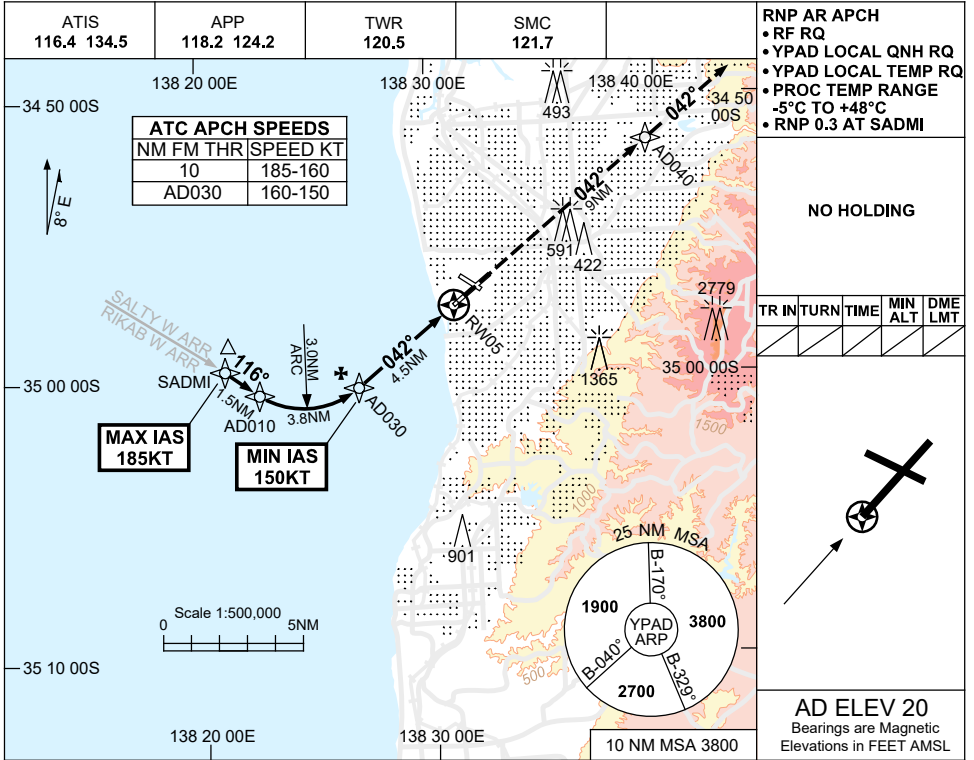
**FOR CASA APPROVED OPERATORS ONLY**

USE QNH

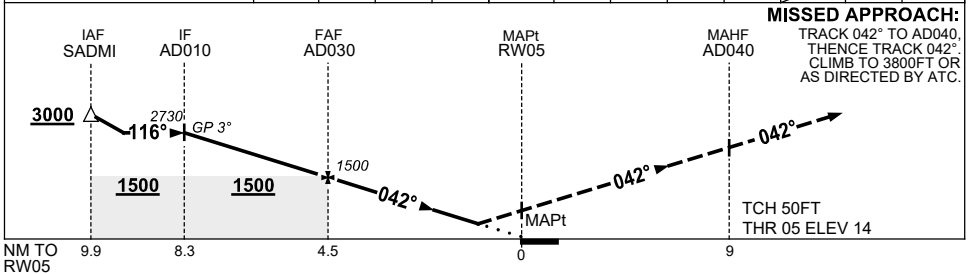
RNP W RWY 05 (AR)

**ADELAIDE, SA (YPAD)**

1 DEC 2022



NM TO NEXT WPT	AD010	3	2	1	AD030	4	3	2	0.9	RW05		
ALT (3.0° APCH PATH)	2730	2450	2140	1820	1500	1340	1020	700	360			



**NOTES**

CATEGORY	A	B	C	D
RNP (0.3)	360 (346-1.9)			
CIRCLING	NOT AUTHORISED			
ALTERNATE	(1380-4.4)	(1480-6.0)	(1480-7.0)	

1. MAX IAS:  
SADMI : 185KT.
2. COLOUR: SEE SPEC NOTICES.

Changes: CHART TITLE, PBN SPECIFICATION BOX.

PADGN17-173