

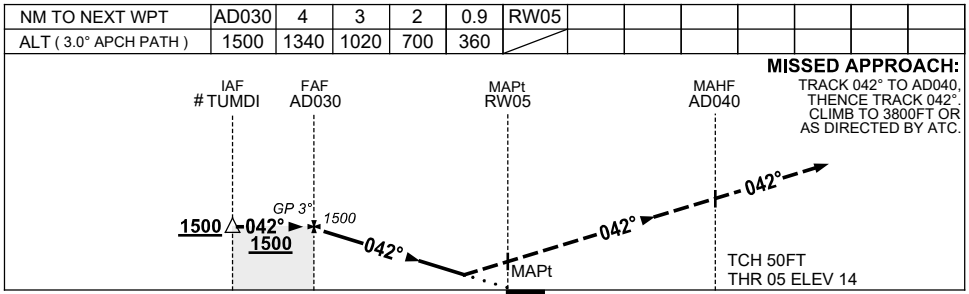
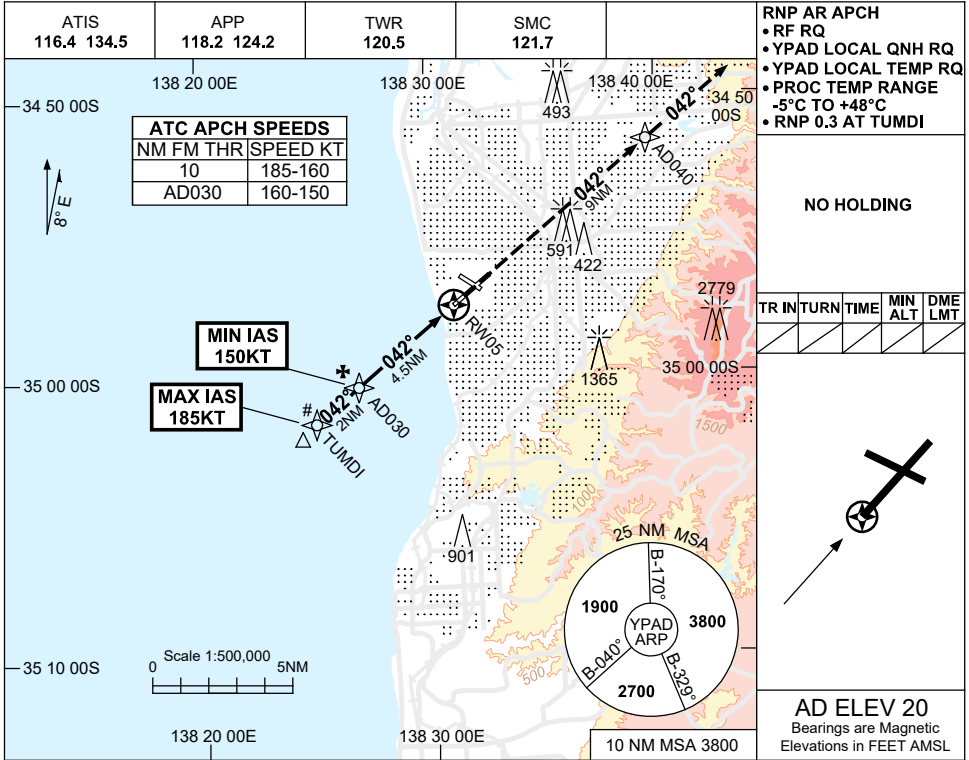
# FOR CASA APPROVED OPERATORS ONLY

USE QNH

RNP Y RWY 05 (AR)

**ADELAIDE, SA (YPAD)**

1 DEC 2022



CATEGORY	A	B	C	D
RNP (0.3)	<b>360 (346-1.9)</b>			
CIRCLING	NOT AUTHORISED			
ALTERNATE	(1380-4.4)	(1480-6.0)	(1480-7.0)	

**NOTES**

- MAX IAS: TUMDI : 185KT.
- ACFT WILL BE RADAR VECTORED TO TUMDI.
- COLOUR:** SEE SPEC NOTICES.

Changes: CHART TITLE, PBN SPECIFICATION BOX.

PADGN12-173