

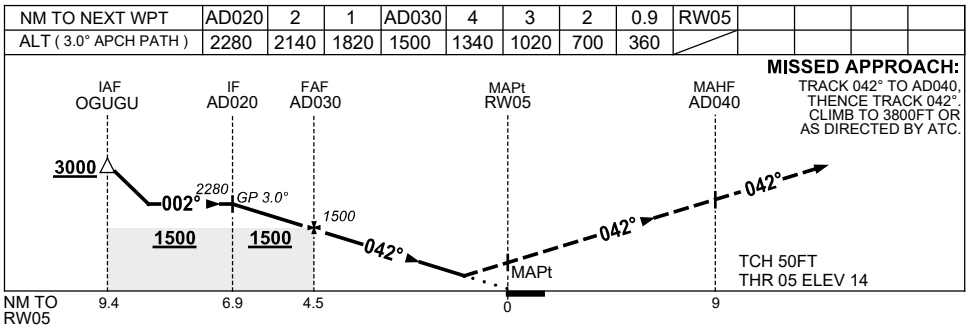
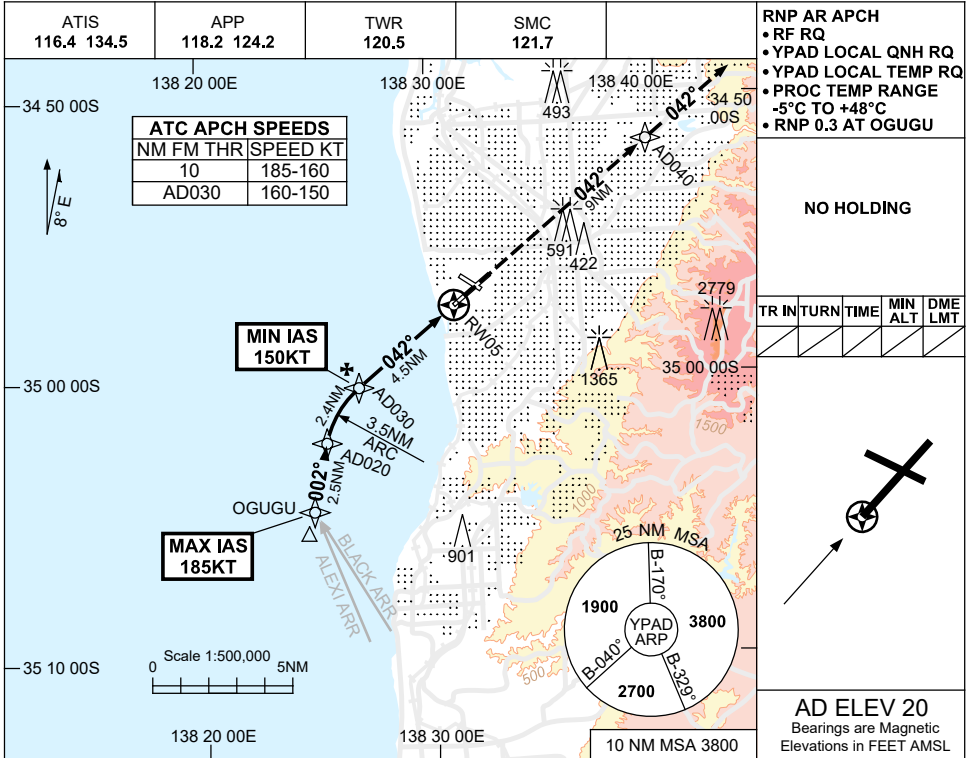
# FOR CASA APPROVED OPERATORS ONLY

USE QNH

RNP X RWY 05 (AR)

**ADELAIDE, SA (YPAD)**

1 DEC 2022



CATEGORY	A	B	C	D
RNP (0.3)	360 (346-1.9)			
CIRCLING	NOT AUTHORISED			
ALTERNATE	(1380-4.4)	(1480-6.0)	(1480-7.0)	

1. MAX IAS:  
OGUGU : 185KT.  
2. COLOUR: SEE SPEC NOTICES.

Changes: CHART TITLE, PBN SPECIFICATION BOX.

PADGN11-173