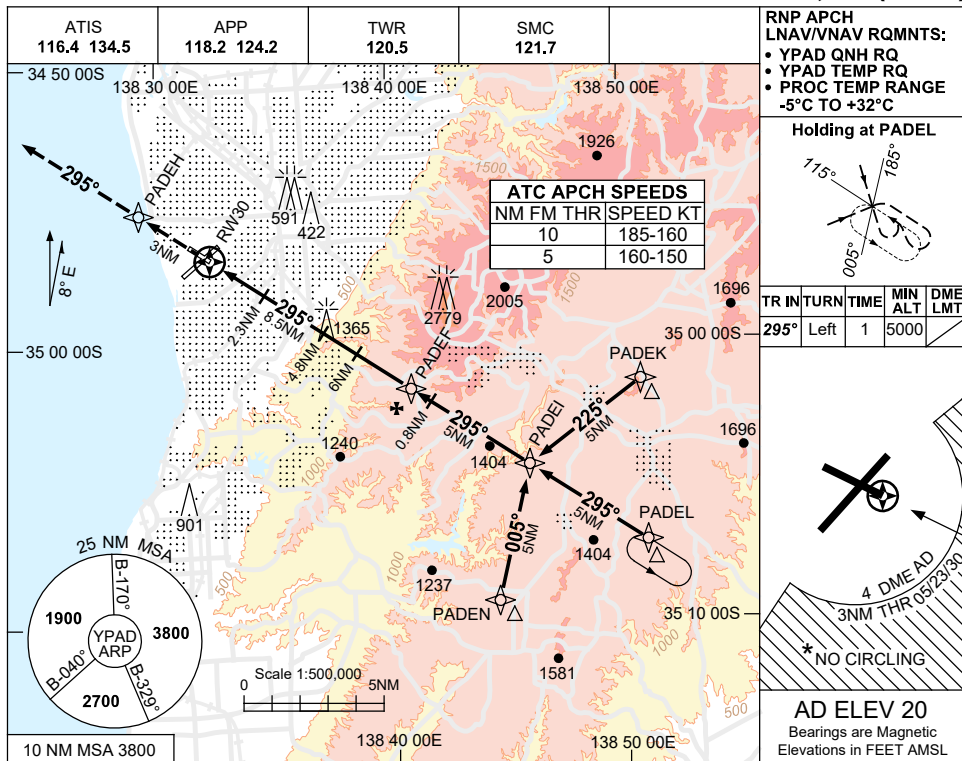


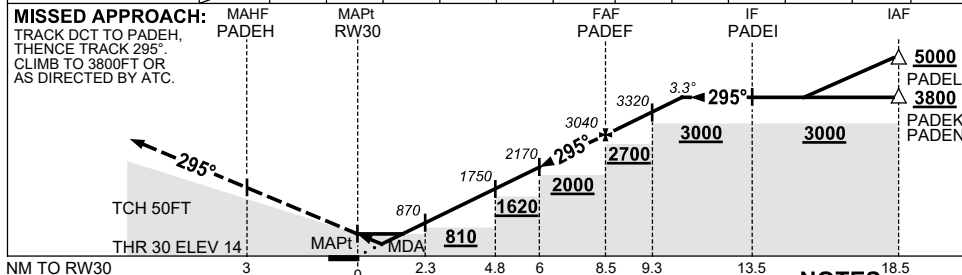
USE QNH

RNP RWY 30  
ADELAIDE, SA (YPAD)

1 DEC 2022



NM TO NEXT WPT	RW30	1	1.1	1.3	2.3	3	4	4.8	6	7	PADEF	0.8	2.2
ALT (3.3° APCH PATH)		420	440	520	870	1120	1470	1750	2170	2520	3040	3320	3800



**NOTES**

1. MAX IAS:  
INITIAL : 210KT.
- \* 2. NO CIRCLING S OF RWY 05/23 BEYOND 4 DME AD OR BEYOND 3NM FM THR 05/23/30.
3. APCH PATH ANGLE DOES NOT COINCIDE WITH PAPI ON GLIDE SLOPE INDICATION.
4. COLOUR: SEE SPEC NOTICES.

CATEGORY	A	B	C	D
LNAV/VNAV		420 (406-2.1)		440 (426-2.2)
LNAV		520 (500-2.6)		
CIRCLING *	900 (880-2.4)		1000 (980-4.0)	1000 (980-5.0)
ALTERNATE	(1380-4.4)		(1480-6.0)	(1480-7.0)

Changes: CHART TITLE, PBN SPECIFICATION BOX.

PADGN04-173