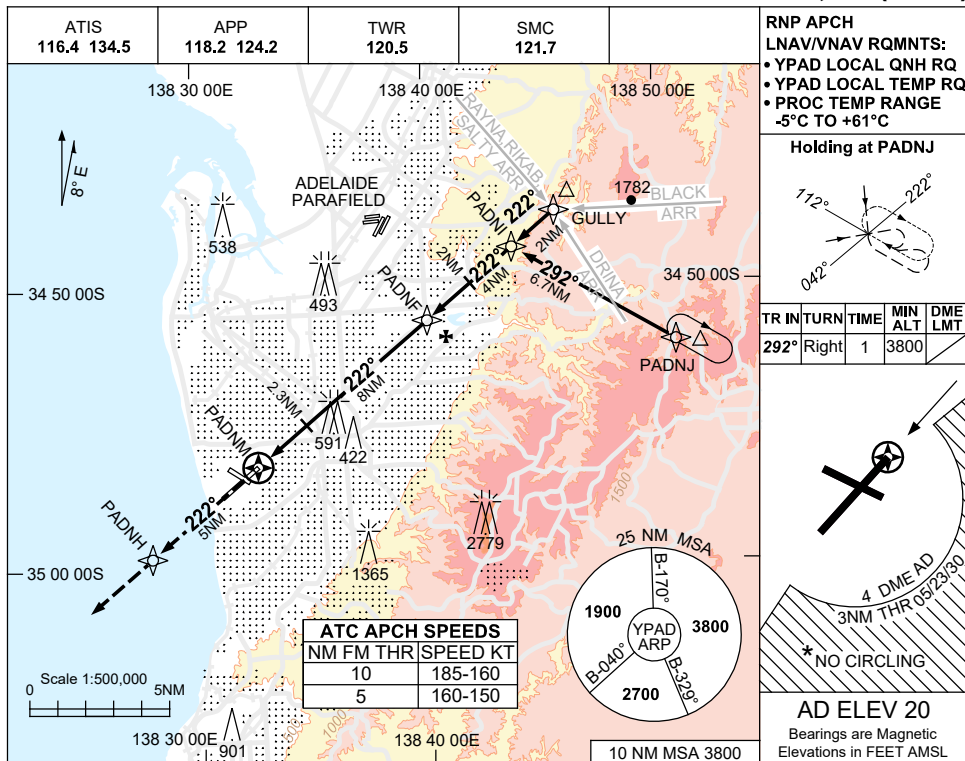


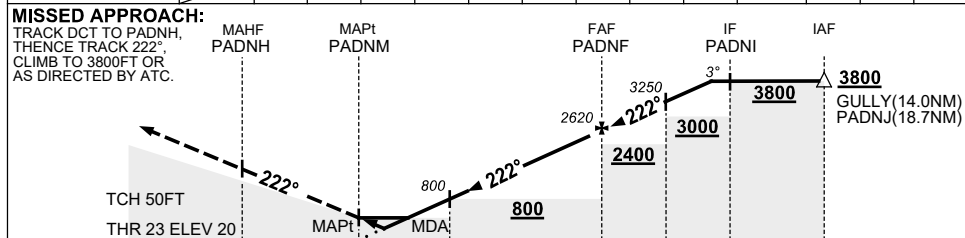
USE QNH

RNP RWY 23  
ADELAIDE, SA (YPAD)

1 DEC 2022



NM TO NEXT WPT	PADNM	1.1	1.4	2	2.3	3	4	5	6	7	PADNF	1	2	3.7
ALT (3° APCH PATH)		430	520	710	800	1030	1340	1660	1980	2300	2620	2940	3250	3800



**NOTES**

1. MAX IAS: INITIAL : 210KT.
- \*2. NO CIRCLING SOUTH OF RWY 05/23 BEYOND 4 DME AD OR BEYOND 3NM FM THR 05/23/30.
3. HLDG MAY NOT BE CONTAINED IN CTA.
4. COLOUR: SEE SPEC NOTICES.

CATEGORY	A	B	C	D
LNAV/VNAV		430 (410-1.5)		
LNAV		520 (500-2.0)		
CIRCLING *	900 (880-2.4)		1000 (980-4.0)	1000 (980-5.0)
ALTERNATE	(1380-4.4)		(1480-6.0)	(1480-7.0)

Changes: FINAL SDF, VIS, CHART TITLE, PBN SPECIFICATION BOX.

PADGN02-173