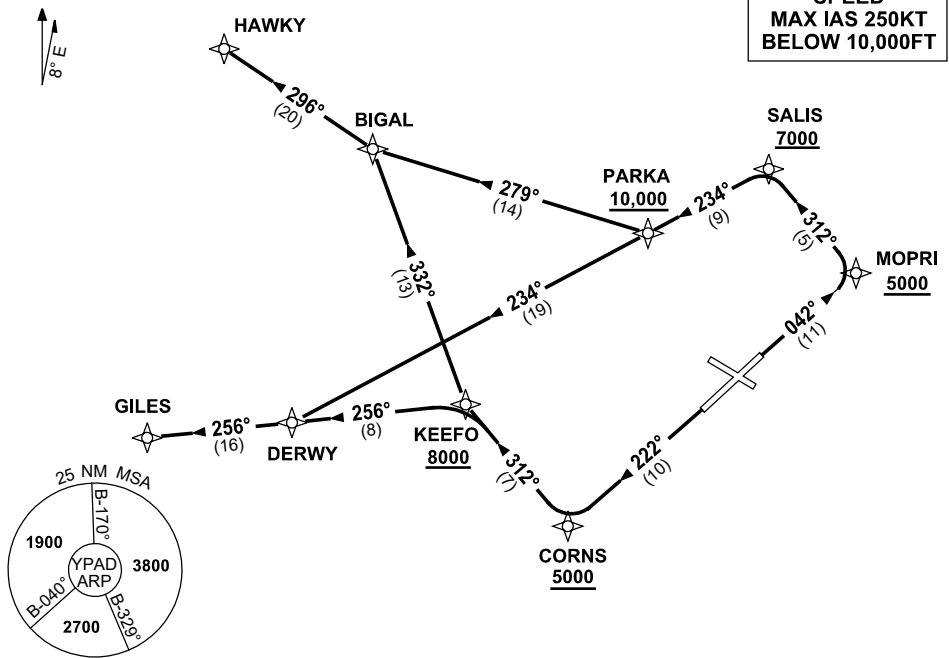


STANDARD INSTRUMENT DEPARTURES (SID)
RWYS WEST (JET) (RNAV)
ADELAIDE, SA (YPAD)

17 JUN 2021

| | | | | | |
|---------------------|--------------|--------------|--------------|--------------|--|
| ATIS 116.4 134.5 | ACD 126.1 | SMC 121.7 | TWR 120.5 | APP 124.2 | Bearings are Magnetic Elevations in FEET AMSL |
|---------------------|--------------|--------------|--------------|--------------|--|

NOT TO SCALE



10 NM MSA 3800

HAWKY FIVE DEPARTURE
GILES FOUR DEPARTURE

RWY 05

- GRAD 4.4% to 900FT thence 3.3%
- Track 042° to MOPRI
Cross MOPRI AT or ABV 5000FT
- Turn LEFT track 312° to SALIS
Cross SALIS AT or ABV 7000FT
- Turn LEFT track 234° to PARKA
Cross PARKA AT or ABV 10,000FT

For HAWKY

- Turn RIGHT track 279° to BIGAL
- Turn RIGHT track 296° to HAWKY, thence as cleared

For GILES

- Track 234° to DERWY
- Turn RIGHT track 256° to GILES, thence as cleared

RWY 23

- GRAD 4.7% to 3300FT thence 3.3%
- Track 222° to CORNS
Cross CORNS AT or ABV 5000FT
- Turn RIGHT track 312° to KEEFO
Cross KEEFO AT or ABV 8000FT

For HAWKY

- Turn RIGHT track 332° to BIGAL
- Turn LEFT track 296° to HAWKY, thence as cleared

For GILES

- Turn LEFT track 256° to DERWY
- Track 256° to GILES, thence as cleared