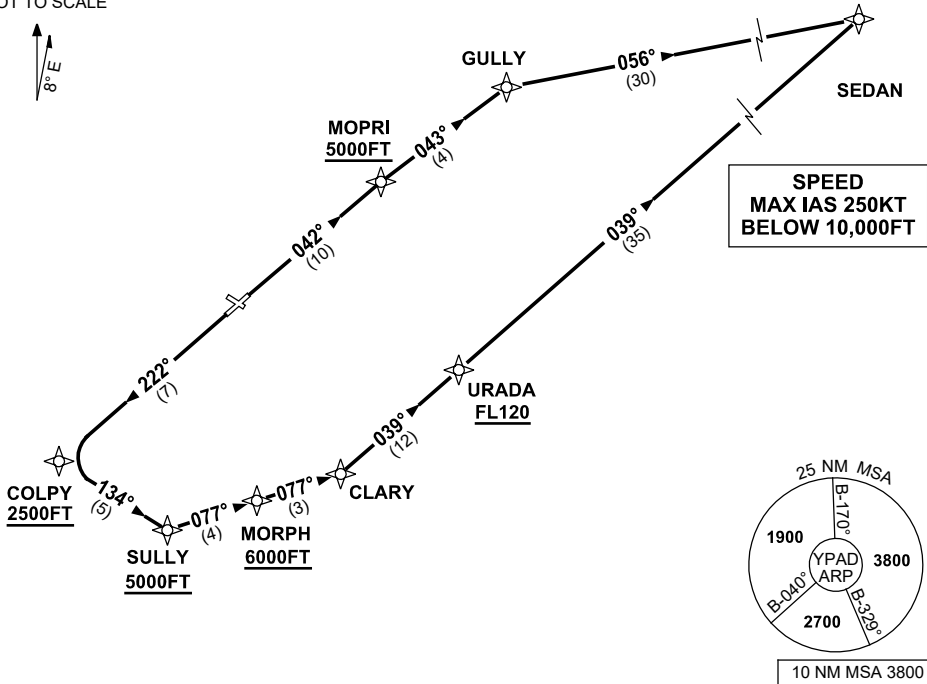


STANDARD INSTRUMENT DEPARTURES (SID)
 SEDAN TWO (JET) (RNAV)
 ADELAIDE, SA (YPAD)

17 JUN 2021

ATIS 116.4 134.5	ACD 126.1	SMC 121.7	TWR 120.5	APP 118.2	Bearings are Magnetic Elevations in FEET AMSL
---------------------	--------------	--------------	--------------	--------------	--------------------------------------------------

NOT TO SCALE



SEDAN TWO DEPARTURE

RWY 05

- GRAD 4.4% to 900FT thence 3.3%
- Track 042° to MOPRI
 Cross MOPRI AT or ABV 5000FT
- Track 043° to GULLY
- Turn RIGHT track 056° to SEDAN,
 thence as cleared

RWY 23

- GRAD 4.7% to 3300FT thence 3.3%
- Track 222° to COLPY
 Cross COLPY AT or ABV 2500FT
- Turn LEFT track 134° to SULLY
 Cross SULLY AT or ABV 5000FT
- Turn LEFT track 077° to MORPH
 Cross MORPH AT or ABV 6000FT
- Track 077° to CLARY,
- Turn LEFT track 039° to URADA,
 Cross URADA AT or ABV FL120
- Track 039° to SEDAN,
 thence as cleared