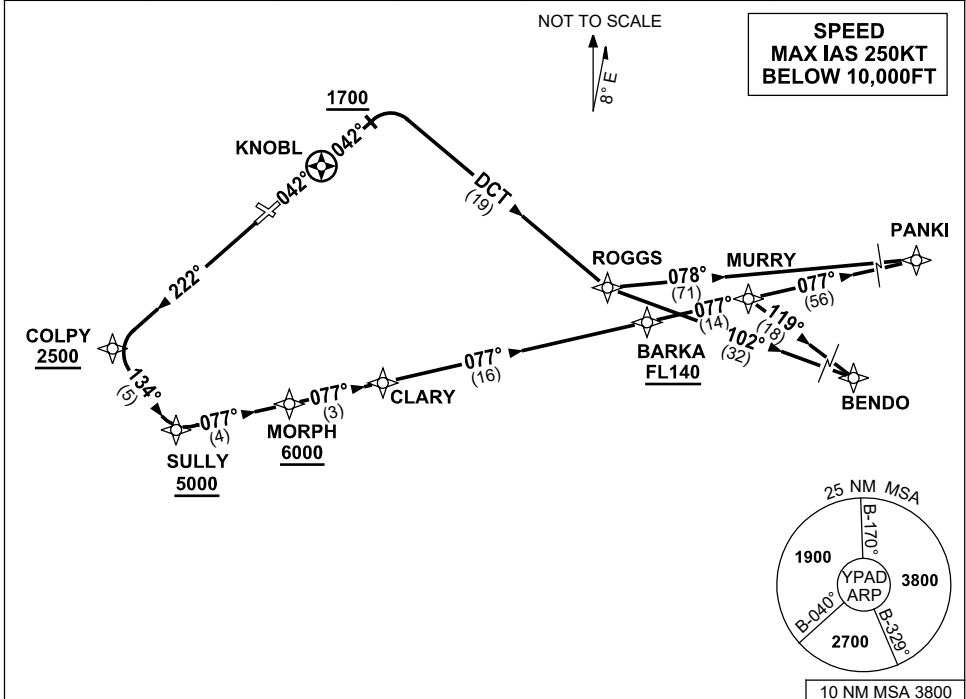


**STANDARD INSTRUMENT DEPARTURES (SID)
RWYS EAST (JET) (RNAV)
ADELAIDE, SA (YPAD)**

17 JUN 2021

| | | | | | |
|---------------------|--------------|--------------|--------------|--------------|--|
| ATIS 116.4 134.5 | ACD 126.1 | SMC 121.7 | TWR 120.5 | APP 118.2 | Bearings are Magnetic Elevations in FEET AMSL |
|---------------------|--------------|--------------|--------------|--------------|--|



**PANKI THREE DEPARTURE
BENDO TWO DEPARTURE**

- RWY 05**
- GRAD 5.7% to 3300FT then 3.3%
 - Track 042°
 - After passing KNOBL **AND** 1700FT turn **RIGHT**
 - Track DCT to ROGGS
- For PANKI
- From ROGGS turn **LEFT** track 078° to PANKI, thence as cleared
- For BENDO
- From ROGGS turn as required, track 102° to BENDO, thence as cleared

- RWY 23**
- GRAD 4.7% to 3300FT then 3.3%
 - Track 222° to COLPY
 - **Cross** COLPY AT or ABV 2500FT
 - Turn **LEFT**, track 134° to SULLY
 - **Cross** SULLY AT or ABV 5000FT
 - Turn **LEFT**, track 077° to MORPH
 - **Cross** MORPH AT or ABV 6000FT
 - Track 077° to CLARY
 - Track 077° to BARKA
 - **Cross** BARKA AT or ABV FL140
 - Track 077° to MURRY
- For PANKI
- From MURRY track 077° to PANKI, thence as cleared
- For BENDO
- From MURRY turn **RIGHT** track 119° to BENDO, thence as cleared

Changes: Editorial.