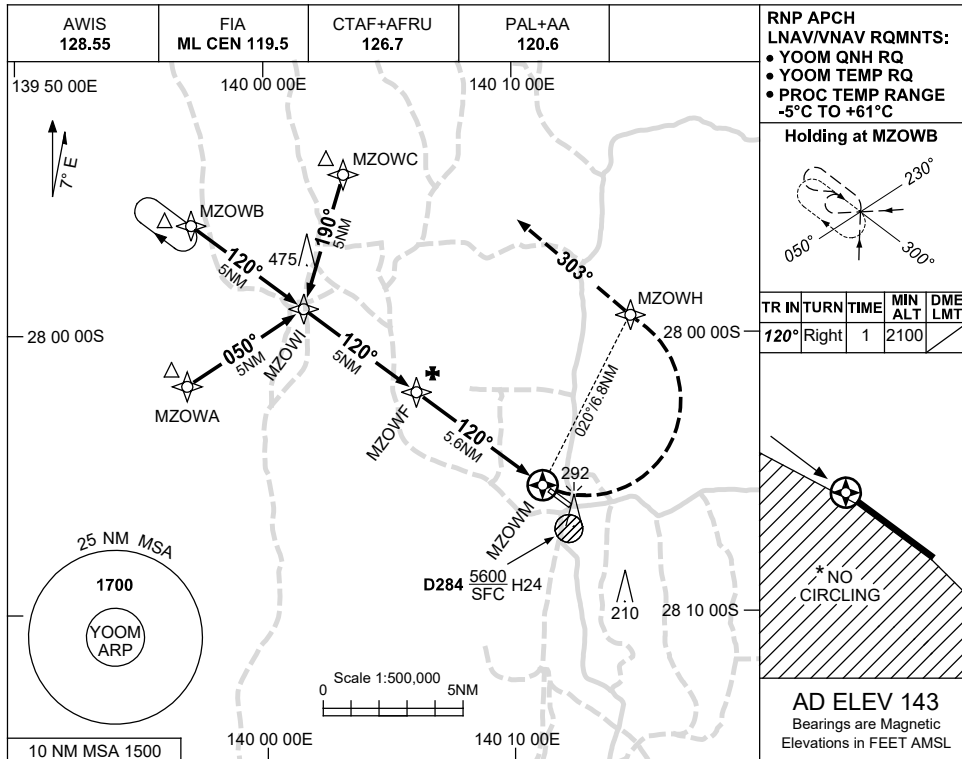


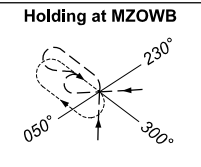
USE QNH

RNP RWY 12  
MOOMBA, SA (YOOM)

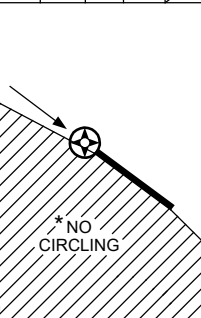
30 NOV 2023



RNP APCH  
LNAV/VNAV RQMTS:  
• YOOM QNH RQ  
• YOOM TEMP RQ  
• PROC TEMP RANGE  
-5°C TO +61°C

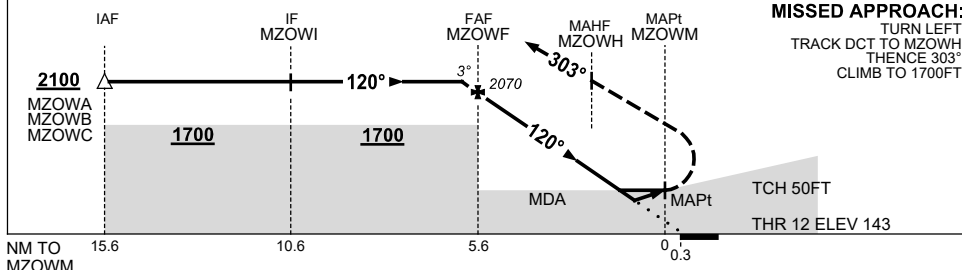


| TR   | IN    | TURN | TIME | MIN ALT | DME LMT |
|------|-------|------|------|---------|---------|
| 120° | Right |      | 1    | 2100    |         |



AD ELEV 143  
Bearings are Magnetic  
Elevations in FEET AMSL

| NM TO NEXT WPT     | 0.1  | MZOWF | 5    | 4    | 3    | 2   | 1.3 | 1.2 | MZOWM |
|--------------------|------|-------|------|------|------|-----|-----|-----|-------|
| ALT (3° APCH PATH) | 2100 | 2070  | 1870 | 1550 | 1230 | 920 | 680 | 650 |       |



MISSED APPROACH:  
TURN LEFT,  
TRACK DCT TO MZOWH,  
THENCE 303°,  
CLIMB TO 1700FT.

NOTES

- MAX IAS: ; 210KT.  
INITIAL  
MAP TURN: 190KT.
- \* NO CIRCLING S OF  
RWY 12/30.

| CATEGORY   | A             | B             | C             | D              |
|------------|---------------|---------------|---------------|----------------|
| LNAV/VNAV  |               | 650 (507-2.9) |               | NOT APPLICABLE |
| LNAV       |               | 680 (537-3.0) |               |                |
| CIRCLING * | 740 (597-2.4) |               | 840 (697-4.0) |                |
| ALTERNATE  | (1097-4.4)    |               | (1197-6.0)    |                |

Changes: UNICOM REMOVAL, Editorial.

OOMGN01-177

