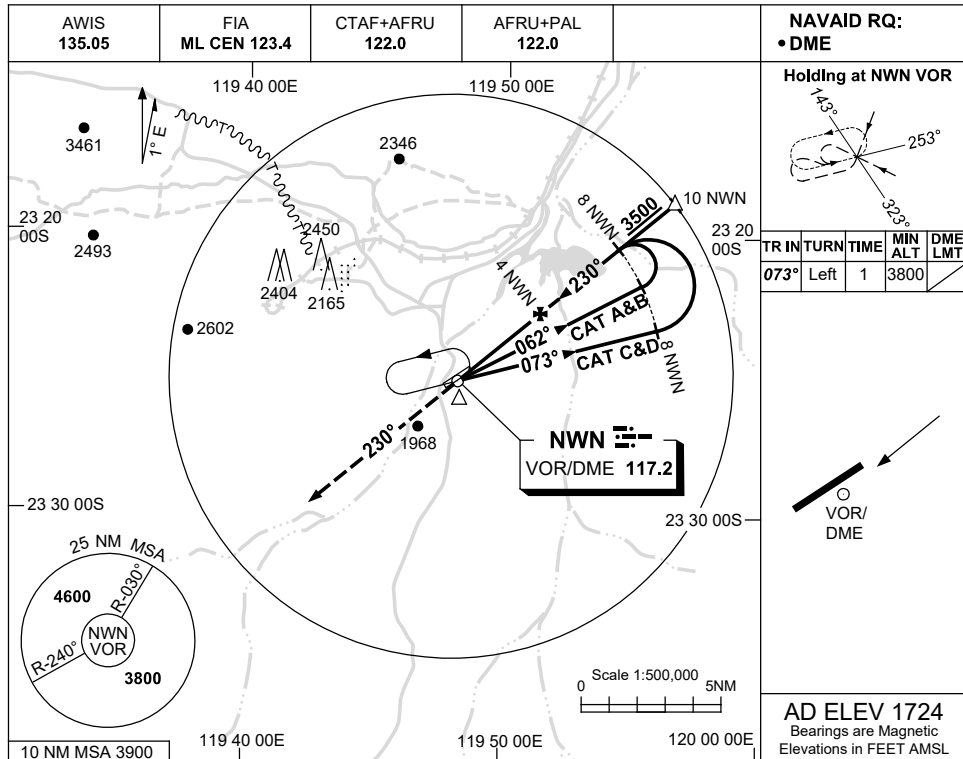


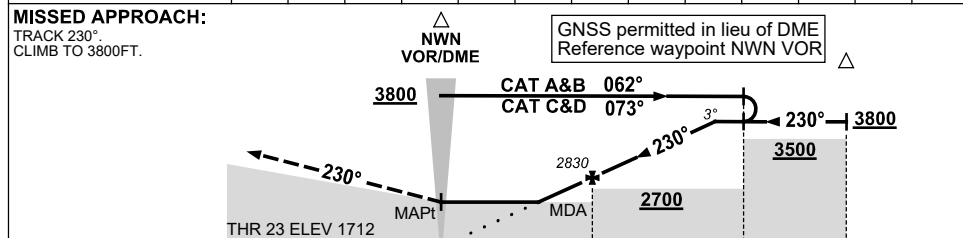
USE QNH

VOR RWY 23  
**NEWMAN, WA (YNWN)**

24 MAR 2022



DIST TO NWN DME	2.2	3	4	5	6	7	7.1						
ALT (3° APCH PATH)	2260	2510	2830	3150	3470	3790	3800						



NM TO NWN DME

**NOTES**

CATEGORY	A	B	C	D
S-I VOR/DME	<b>2260 (548-3.1)</b>			
CIRCLING	<b>2500 (776-2.4)</b>	<b>2730 (1006-4.0)</b>	<b>2860 (1136-5.0)</b>	
ALTERNATE	(1276-4.4)	(1506-6.0)	(1636-7.0)	

1. MAX IAS:  
 INITIAL : 210KT.

Changes: MIN SEGMENT ALTITUDE CORRECTION.

NWNVO02-170