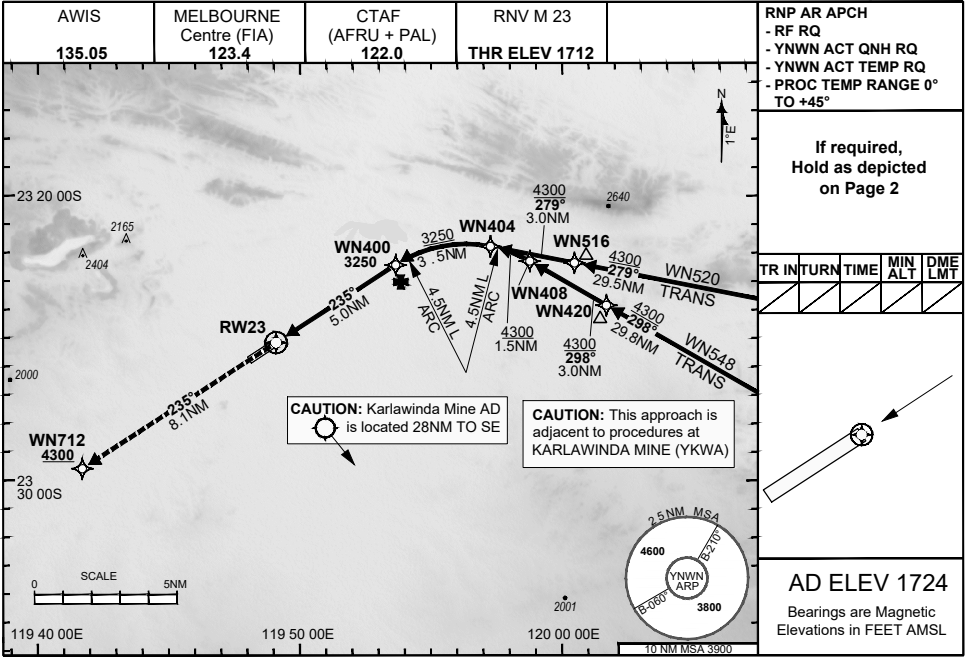


**FOR CASA APPROVED OPERATORS ONLY**

30 NOV 2023

USE QNH

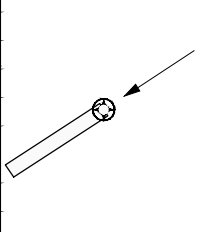
**NEWMAN, WA (YNWN)**



RNP AR APCH  
 - RF RQ  
 - YNWN ACT QNH RQ  
 - YNWN ACT TEMP RQ  
 - PROC TEMP RANGE 0° TO +45°

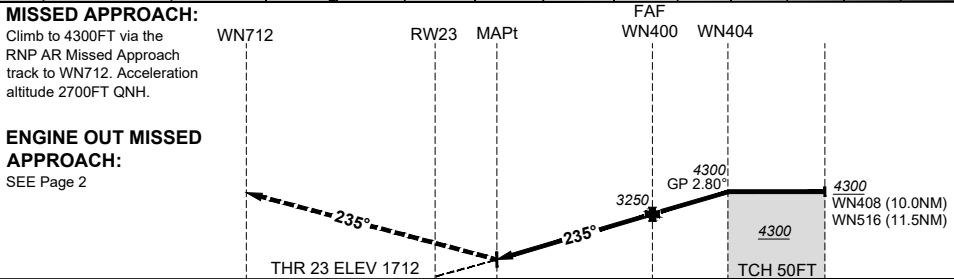
If required, Hold as depicted on Page 2

TR	INT	TIME	MIN ALT	DME LMT



**AD ELEV 1724**  
 Bearings are Magnetic Elevations in FEET AMSL

DISTANCE FM THR	RW23	0.8	WN400	WN404	WN408	WN516
<b>ALT (2.80° APCH PATH)</b>	2006	3250	4300	4730	4880	



NM FM THR	8.1	0	5.0	8.5
THR				

**NOTES**

- 1) Lateral transition to MAP must not be initiated prior to DA(H) PSN.
- 2) PAPI and glidepath not coincident.
- 3) Minimum MAP gradient (All Engines) 4.6% to 4300FT.
- 4) CAUTION: This approach is adjacent to procedures at KARLAWINDA MINE (YKWA).

CATEGORY	A	B	C	D
RNP (0.30)	NOT APPLICABLE		DA(H) 2006' (294)-1.6	
CIRCLING	NOT AUTHORISED			

202308101015COPYRIGHT 2023 NAVERUS, INC. USA, GE PROPRIETARY INFORMATION

Changes: EDITORIAL, KARLAWINDA ADD MINE, RNAV (RNP) TO RNP AR, RNP AR NOTES, REMOVED B737 NOTE

NWNGN05-177

**DO NOT USE FOR NAVIGATION**

Prepared by GE Aviation

