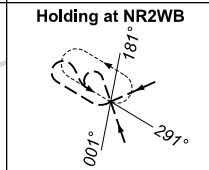
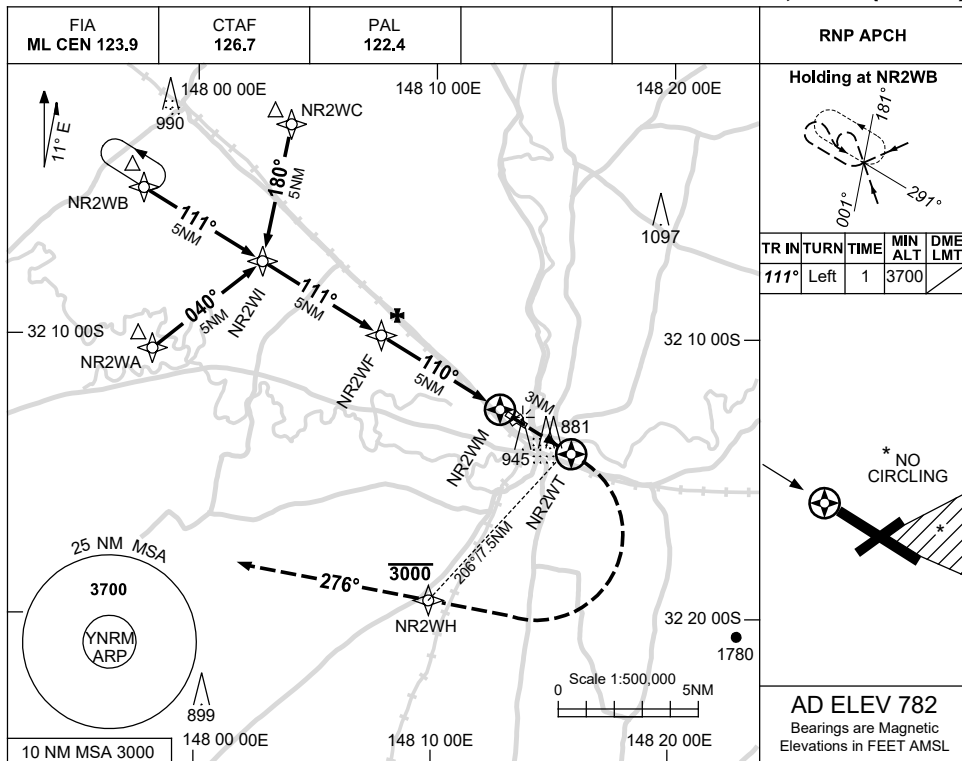


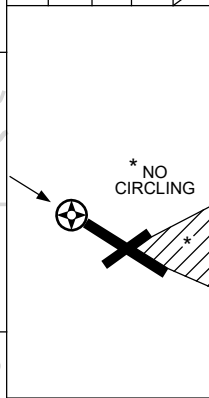
USE QNH

RNP RWY 11
NARROMINE, NSW (YNRM)

15 JUN 2023

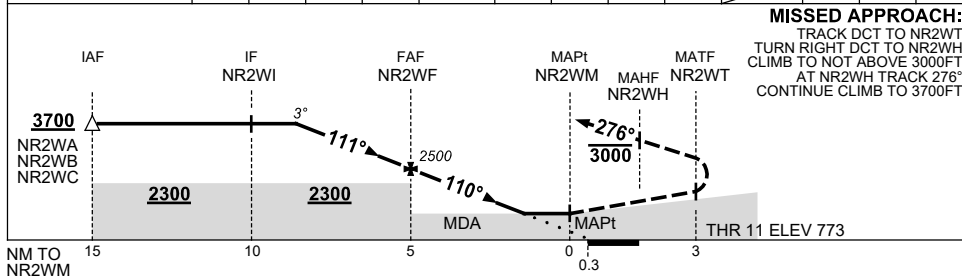


TR	IN	TURN	TIME	MIN ALT	DME LMT
111°	Left	1		3700	



AD ELEV 782
 Bearings are Magnetic
 Elevations in FEET AMSL

NM TO NEXT WPT	3.8	3	2	1	NR2WF	4	3	2	1.1	NR2WM			
ALT (3° APCH PATH)	3700	3460	3140	2820	2500	2180	1860	1550	1270				



MISSED APPROACH:
 TRACK DCT TO NR2WT,
 TURN RIGHT DCT TO NR2WH,
 CLIMB TO NOT ABOVE 3000FT.
 AT NR2WH TRACK 276°.
 CONTINUE CLIMB TO 3700FT.

NOTES

CATEGORY	A	B	C	D
LNAV	1270 (497-2.8)			NOT APPLICABLE
CIRCLING *	1390 (608-2.4)		1550 (768-4.0)	
ALTERNATE	(1108-4.4)		(1268-6.0)	

- 1. MAX IAS: INITIAL : 230KT.
- * 2. NO CIRCLING EAST OF RWYS 22 & 29.

Changes: CHART TITLE, PBN SPECIFICATION BOX, Editorial.

NRMGN01-175