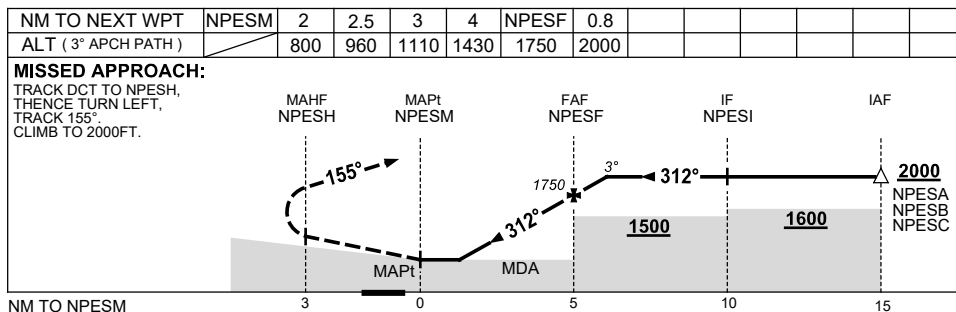
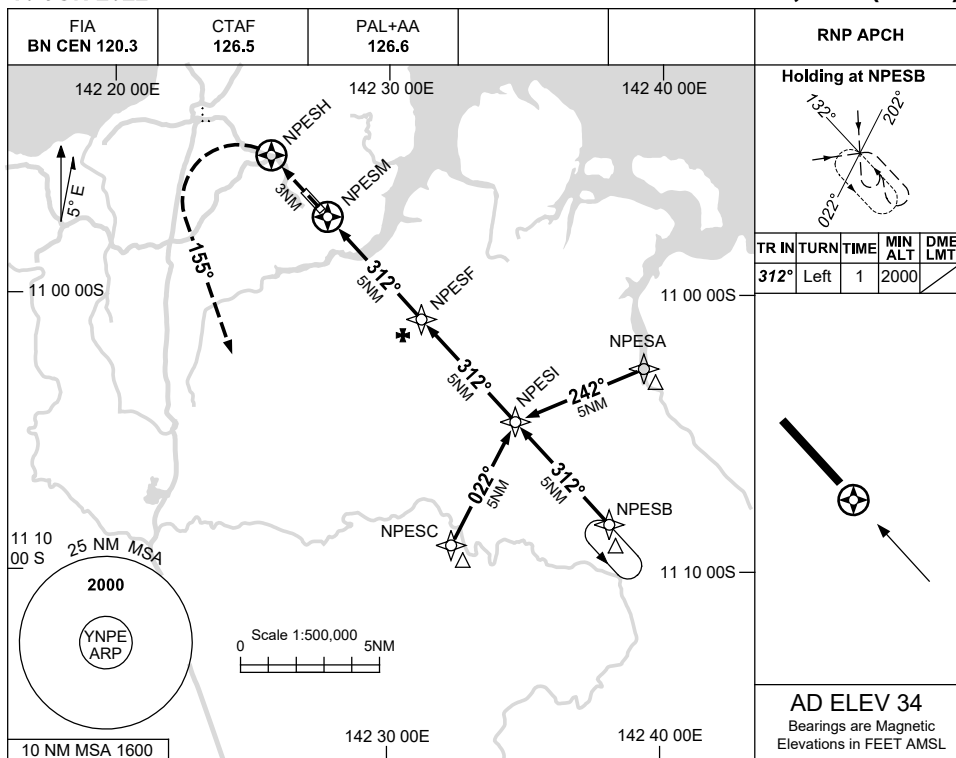


USE QNH

RNP E

16 JUN 2022

NORTHERN PENINSULA, QLD (YNPE)



NOTES

CATEGORY	A	B	C	D
				NOT APPLICABLE
CIRCLING	800 (766-2.4)		960 (926-4.0)	
ALTERNATE	(1266-4.4)		(1426-6.0)	

1. MAX IAS:
INITIAL : 210KT.

Changes: PAL+AA.

NPEGN02-171