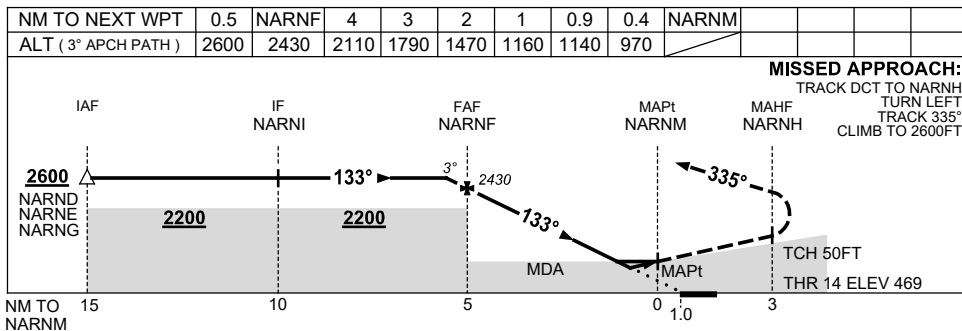
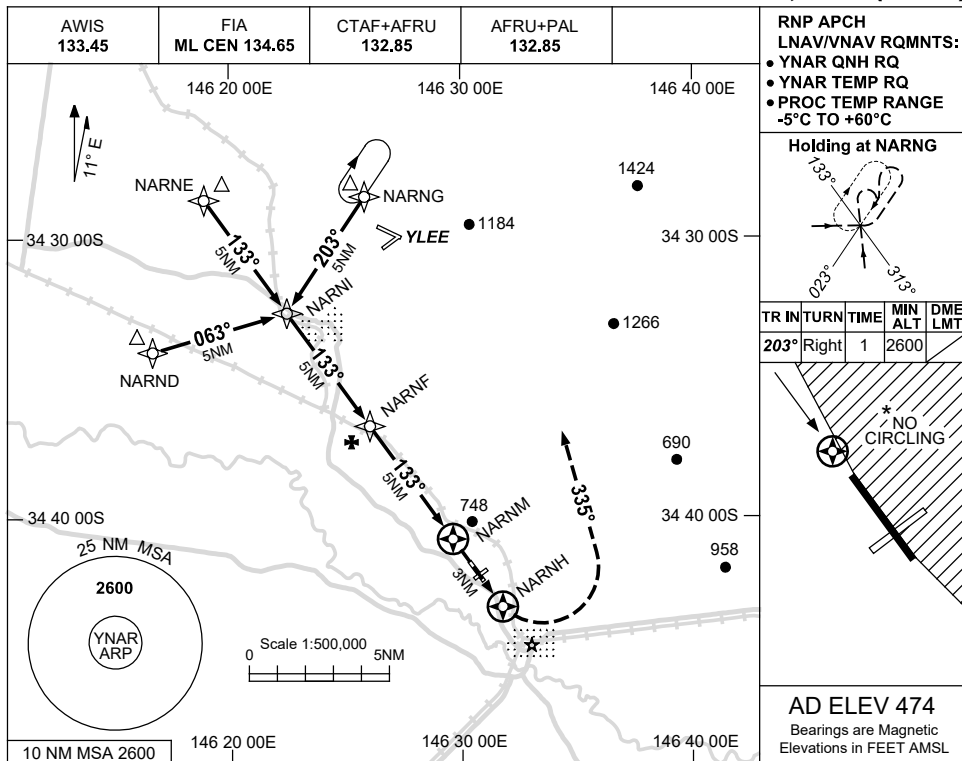


USE QNH

RNP RWY 14

7 SEP 2023

NARRANDERA, NSW (YNAR)



NOTES

CATEGORY	A	B	C	D
LNAV/VNAV		970 (501-2.8)		NOT APPLICABLE
LNAV		1140 (666-3.8)		
CIRCLING *	1200 (726-2.4)		1340 (866-4.0)	
ALTERNATE	(1226-4.4)		(1366-6.0)	

1. MAX IAS: INITIAL : 230KT.
- * 2. NO CIRCLING EAST OF RWY 14/32.

Changes: MODEL ACFT REMOVED.

NARGN01-176

