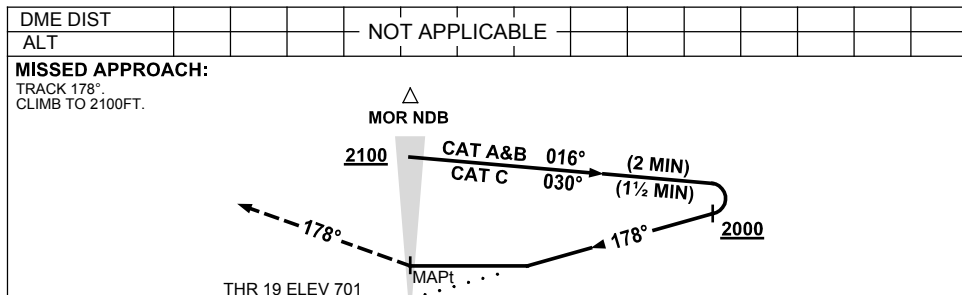
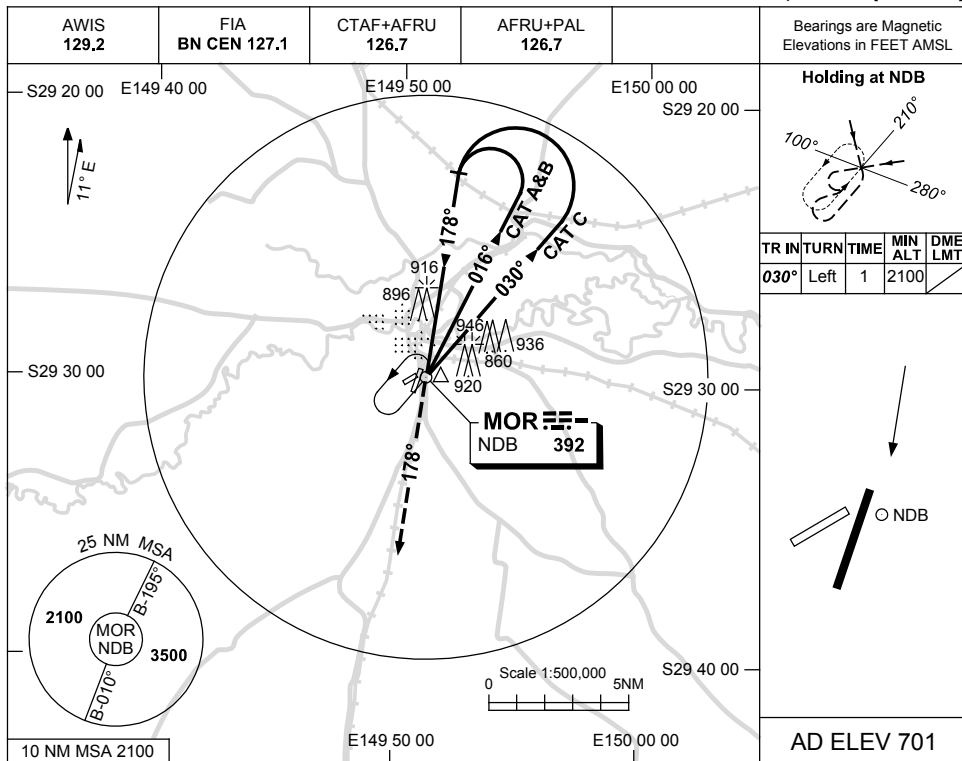


USE QNH

NDB RWY 19  
**MOREE, NSW (YMOR)**

1 MAR 2018



**NOTES**

CATEGORY	A	B	C	D
S-I NDB	1340 (639-3.6)			NOT APPLICABLE
CIRCLING	1350 (649-2.4)	1440 (739-4.0)		
ALTERNATE	(1149-4.4)		(1239-6.0)	

1. MAX IAS:  
 INITIAL : 210KT.

Changes: AFRU+PAL.

MORN01-154