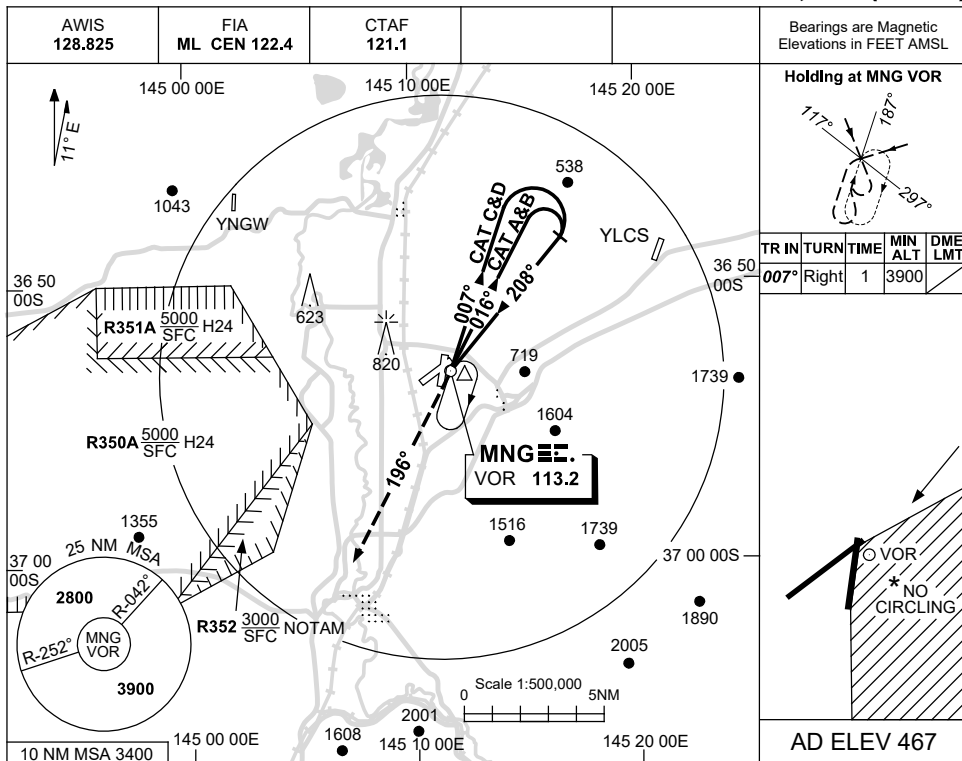


USE QNH

VOR RWY 23
MANGALORE, VIC (YMNG)

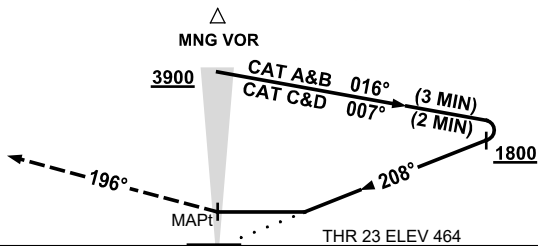
21 MAR 2024



| | | | | |
|----------|----------------|--|--|--|
| DME DIST | NOT APPLICABLE | | | |
| ALT | | | | |

MISSED APPROACH:

TURN LEFT,
TRACK 196°,
CLIMB TO 3900ft.



NOTES

1. MAX IAS:
HOLDING : 180KT.
INITIAL :
CAT C&D : 180KT.
- *2. NO CIRCLING IN
SECTOR EAST OF RWY
18/36 AND STH EAST
OF RWY 05/23.
3. SEPARATION FM
R350A/B & R352 NOT
ASSURED WHEN
HLDG OR IN THE
MISSED APCH

| CATEGORY | A | B | C | D |
|------------|-----------------------|-----------------------|-----------------------|---|
| S-I VOR | 1120 (653-3.7) | | | |
| CIRCLING * | 1320 (853-2.4) | 1420 (953-4.0) | 1420 (953-5.0) | |
| ALTERNATE | (1353-4.4) | (1453-6.0) | (1453-7.0) | |

Changes: NOTES.

MNGV001-178