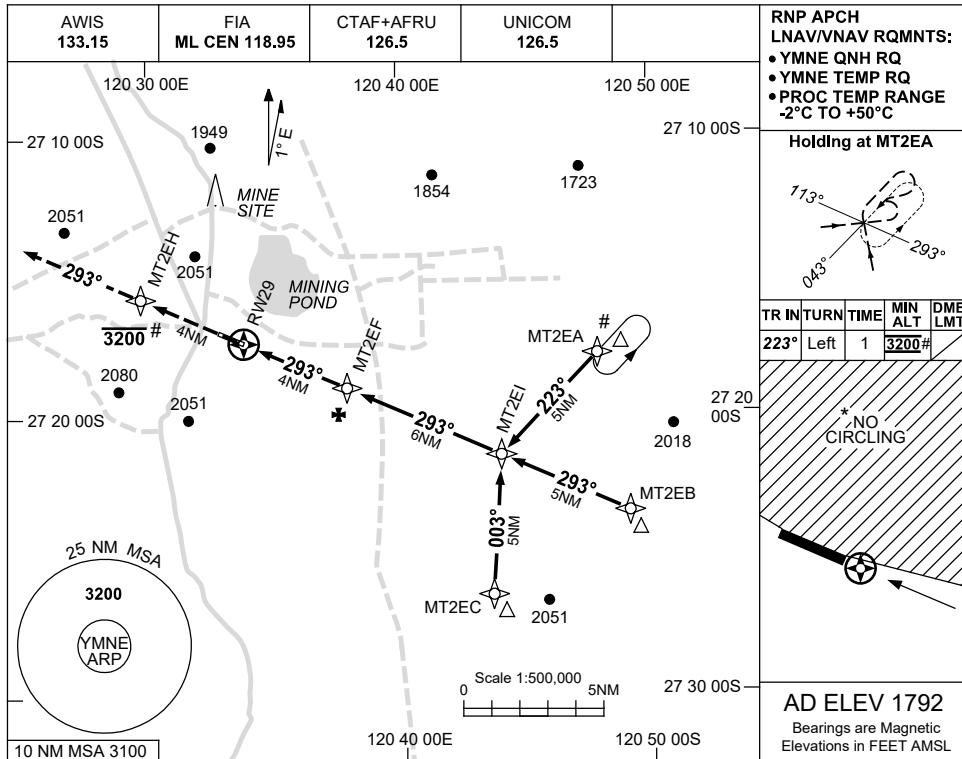


USE QNH

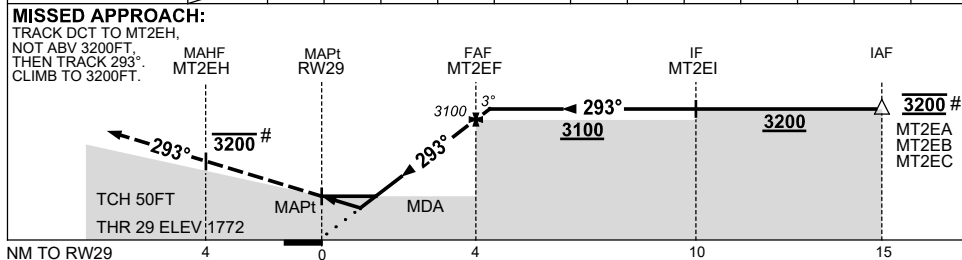
RNP RWY 29

**MOUNT KEITH, WA (YMNE)**

7 SEP 2023



NM TO NEXT WPT	RW29	0.7	1.4	2	3	MT2EF	0.3						
ALT (3° APCH PATH)		2030	2270	2460	2780	3100	3200						



**NOTES**

- MAX IAS:  
INITIAL : 210KT.
- NO CIRCLING NTH OF RWY 11/29.
- CAUTION:** PROC IS OVERLAID BY YBLU RNP RWY 19. PRESCRIBED ALTITUDES ENSURE SEPARATION.

CATEGORY	A	B	C	D
LNAV/VNAV		2030 (258-1.5)		NOT APPLICABLE
LNAV		2270 (498-2.8)		
CIRCLING *	2480 (688-2.4)		2600 (808-4.0)	
ALTERNATE	(1188-4.4)		(1308-6.0)	

Changes: CHART TITLE, PBN SPECIFICATION BOX, NOTE 3, Editorial.

MNEGN02-176