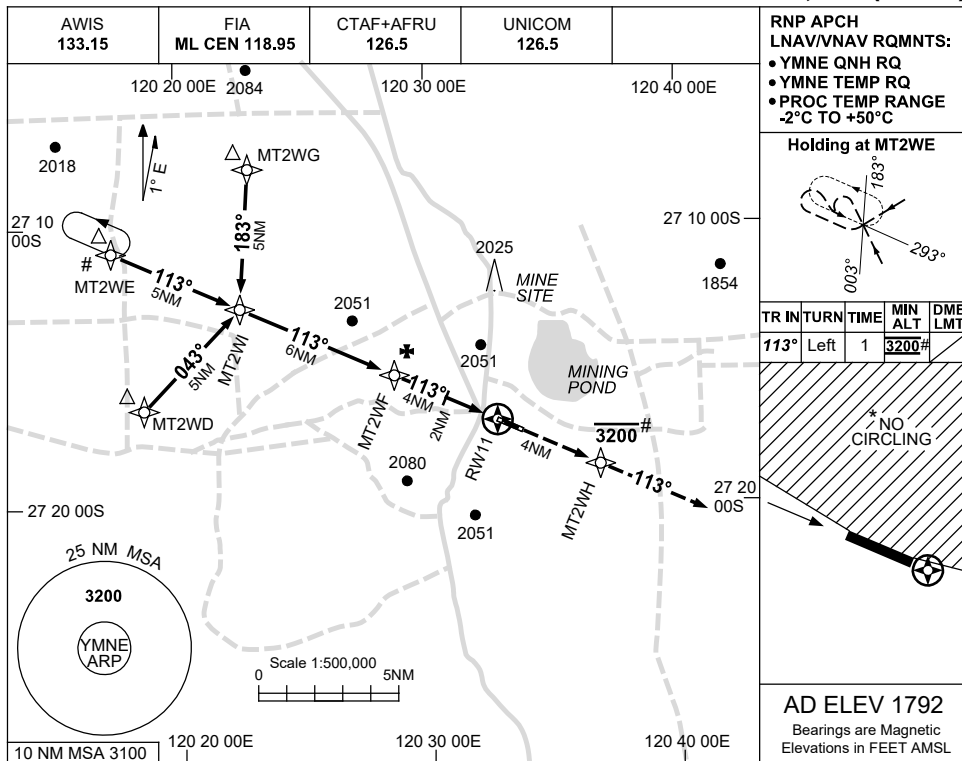


USE QNH

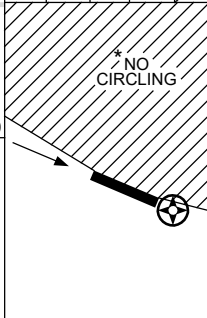
RNP RWY 11

MOUNT KEITH, WA (YMNE)

7 SEP 2023

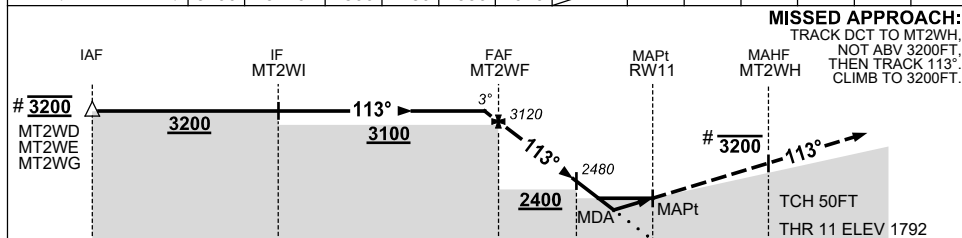


| TR | IN | TURN | TIME | MIN ALT | DME LMT |
|------|------|------|------|---------|---------|
| 113° | Left | 1 | | 3200# | |



AD ELEV 1792
Bearings are Magnetic
Elevations in FEET AMSL

| NM TO NEXT WPT | 0.3 | MT2WF | 3 | 2 | 1.5 | 0.7 | RW11 |
|--------------------|------|-------|------|------|------|------|------|
| ALT (3° APCH PATH) | 3200 | 3120 | 2800 | 2480 | 2330 | 2070 | |



MISSED APPROACH:
TRACK DCT TO MT2WH,
NOT ABV 3200FT,
THEN TRACK 113°
CLIMB TO 3200FT.

- NOTES**
- MAX IAS:
INITIAL : 210KT.
 - NO CIRCLING NTH OF RWY 11/29.
 - CAUTION:** PROC IS OVERLAID BY YBLU RNP RWY 19. PRESCRIBED ALTITUDES ENSURE SEPARATION.

| CATEGORY | A | B | C | D |
|------------|----------------|----------------|----------------|----------------|
| LNAV/VNAV | | 2070 (278-1.5) | | NOT APPLICABLE |
| LNAV | | 2330 (538-3.0) | | |
| CIRCLING * | 2480 (688-2.4) | | 2600 (808-4.0) | |
| ALTERNATE | (1188-4.4) | | (1308-6.0) | |

Changes: CHART TITLE, PBN SPECIFICATION BOX, NOTE 3, Editorial.

MNEGN01-176