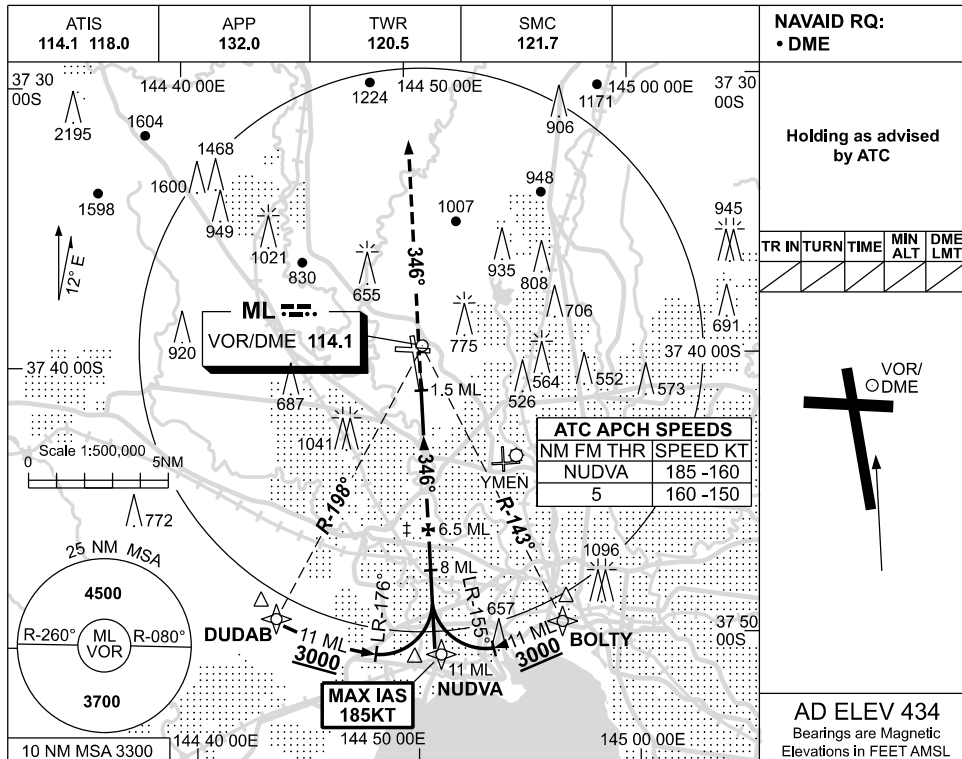


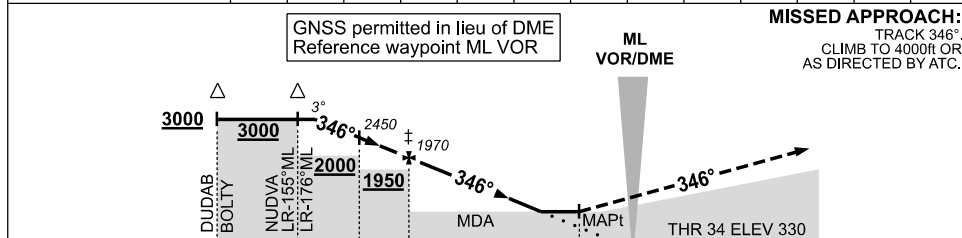
USE QNH

VOR RWY 34
MELBOURNE, VIC (YMML)

19 MAR 2026



DIST TO ML DME	9.7	9	8	7	6.5	6	5	4	3	2.7			
ALT (3° APCH PATH)	2990	2770	2450	2130	1970	1810	1490	1180	860	760			



CATEGORY	A	B	C	D
S-I VOR/DME	760 (430-2.4)			
CIRCLING	1140 (706-2.4)		1450 (1016-4.0)	
ALTERNATE †	(1206-4.4)		(1666-7.0)	

- NOTES**
1. MAX IAS :
NUDVA : 185KT.
 - ‡ 2. SPECIAL ALT MNM
700/2.5KM.
 - † 3. ACFT MAY BE
RADAR VECTORED
TO IAF.

Changes: ABN DELETED.

MMLV003-186