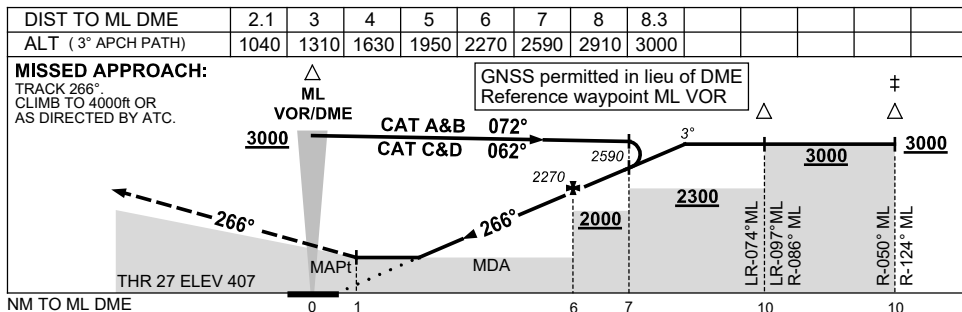
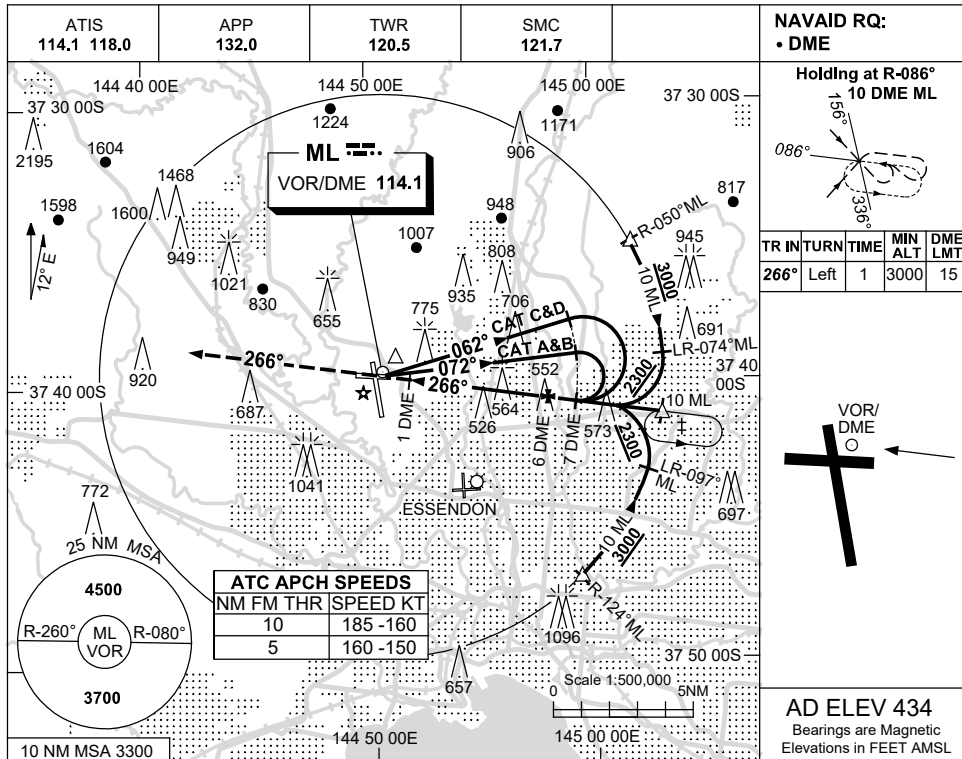


USE QNH

VOR RWY 27
MELBOURNE, VIC (YMML)

21 MAR 2024



NOTES

CATEGORY	A	B	C	D
S-I VOR/DME	1040 (633-2.9)			
CIRCLING	1140 (706-2.4)	1450 (1016-4.0)	1600 (1166-5.0)	
ALTERNATE*	(1206-4.4)	(1516-6.0)	(1666-7.0)	

* 1. SPECIAL ALT MNM NOT APPLICABLE.
‡ 2. ACFT MAY BE RADAR VECTORED TO IAF.

Changes: VAR.

MMLVO02-178