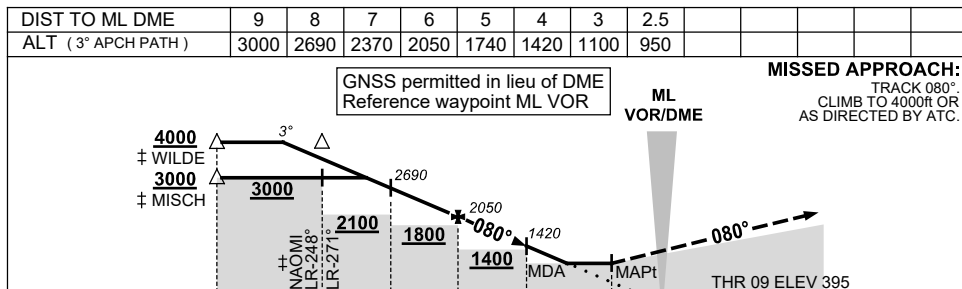
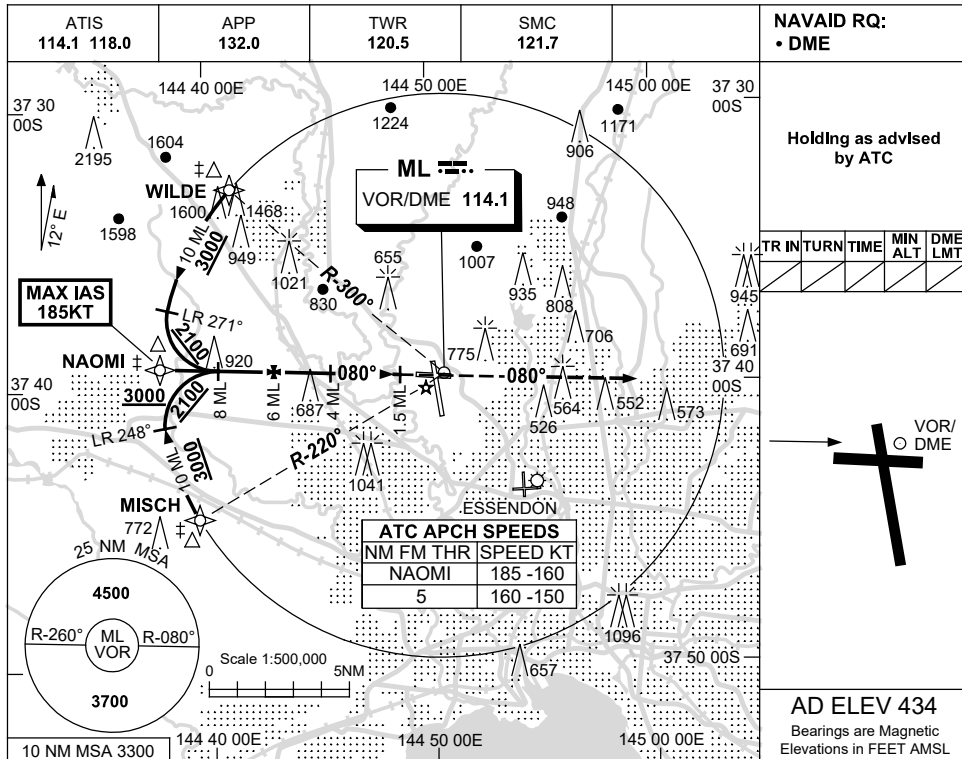


USE QNH

VOR RWY 09

21 MAR 2024

MELBOURNE, VIC (YMML)



CATEGORY	A	B	C	D
S-I VOR/DME	950 (555-3.2)			
CIRCLING	1140 (706-2.4)		1450 (1016-4.0) 1600 (1166-5.0)	
ALTERNATE ‡	(1206-4.4)		(1516-6.0) (1666-7.0)	

- NOTES**
1. MAX IAS:
NAOMI : 185KT.
 - ‡ 2. SPECIAL ALT MNM NOT APPLICABLE.
 - ‡ 3. ACFT MAY BE RADAR VECTORED TO IAF.

Changes: VAR.

MMLV001-178