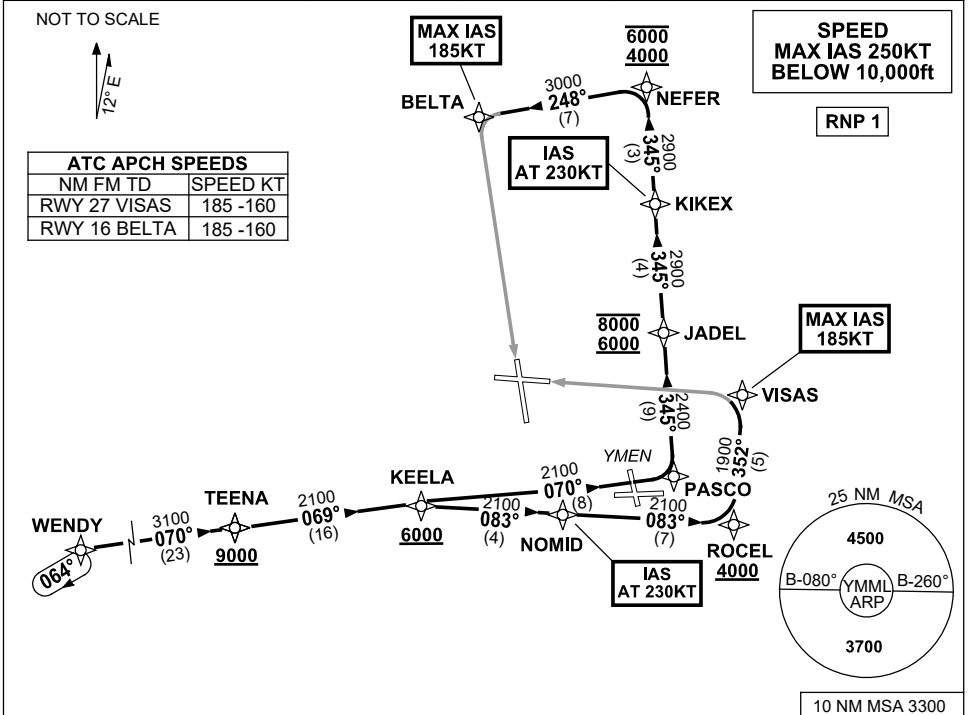


**STANDARD INSTRUMENT ARRIVAL (STAR)
WENDY ONE ALPHA ARRIVAL (RNAV) RWY 16/27
MELBOURNE, VIC (YMML)**

21 MAR 2024

ATIS 114.1 118.0	APP 129.4 132.0	TWR 120.5	SMC 121.7		Bearings are Magnetic Elevations in FEET AMSL
---------------------	--------------------	--------------	--------------	--	--



ARRIVAL: WENDY ONE ALPHA
From WENDY track 070° to TEENA; then:

RWY 16:

Cross TEENA AT or ABV 9000ft

- From TEENA track 069° to KEELA
- Cross** KEELA AT or ABV 6000ft
- Track 070° to PASCO
- Turn LEFT, track 345° to JADEL
- Cross** JADEL BTN 6000ft and 8000ft
- Track 345° to KIKEX
- IAS AT 230KT** from KIKEX
- Track 345° to NEFER
- Cross** NEFER BTN 4000ft and 6000ft
- Turn LEFT, track 248° to BELTA
- MAX IAS 185KT from BELTA
- Track via GLS RWY 16 or ILS RWY 16 or RNP Z RWY 16 or LOC RWY 16

RWY 27:

Cross TEENA AT or ABV 9000ft

- From TEENA track 069° to KEELA
- Cross** KEELA AT or ABV 6000ft
- Turn RIGHT, track 083° to NOMID
- IAS AT 230KT** from NOMID
- Track 083° to ROCEL
- Cross** ROCEL AT or ABV 4000ft
- Turn LEFT, track 352° to VISAS
- MAX IAS 185KT from VISAS
- Track via GLS RWY 27 or ILS RWY 27 or RNP RWY 27 or LOC RWY 27

COMMUNICATIONS FAILURE: PROCEDURE IN IMC

- Squawk 7600, comply with vertical navigation requirements, but not below MSA.
- Track via the latest STAR clearance to the nominated runway, then fly the most suitable approach in accordance with ERSA EMERG Section 1.5.

Changes: VAR.

MMLSR35-178