

**STANDARD INSTRUMENT ARRIVAL (STAR)
ARBEY EIGHT ALPHA ARRIVAL (RNAV) RWY 27/34
MELBOURNE, VIC (YMML)**

12 JUN 2025

ATIS 114.1 118.0	APP/DEP 118.9 132.0	TWR 120.5	SMC 121.7		Bearings are Magnetic Elevations in FEET AMSL
---------------------	------------------------	--------------	--------------	--	--

NOT TO SCALE

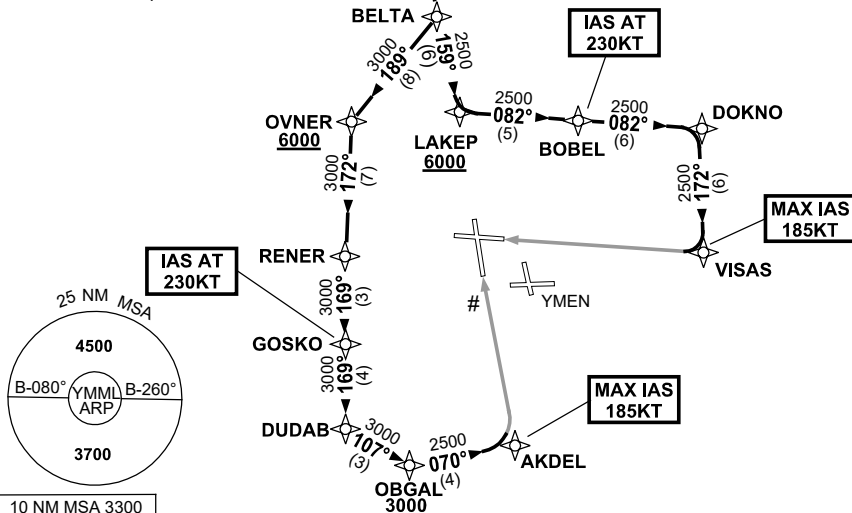


**SPEED
MAX IAS 250KT
BELOW 10,000ft**

RNP 1

ATC APCH SPEEDS	
NM FM TD	SPEED KT
RWY 27 VISAS	185 -160
RWY 34 AKDEL	185 -160

CAUTION: RWY 34 is indicated by Runway Threshold Identification Lights, Essendon Airport 5NM SE of ML.



ARRIVAL: ARBEY EIGHT ALPHA

- **Cross** ARBEY AT or ABV 8000ft
- From ARBEY, track 156° to TUNKA
Cross TUNKA AT or BLW 9000ft, then:

RWY 27:

- Track 160° to BELTA
- Track 159° to LAKEP
Cross LAKEP AT or ABV 6000ft
- Turn LEFT, track 082° to BOBEL
IAS AT 230KT from BOBEL
- Track 082° to DOKNO
- Turn RIGHT, track 172° to VISAS
MAX IAS 185KT from VISAS
- Track via GLS RWY 27 or ILS RWY 27 or RNP RWY 27 or LOC RWY 27

RWY 34:

- Track 160° to BELTA
- Turn RIGHT, track 189° to OVNER
Cross OVNER AT or ABV 6000ft
- Turn LEFT, track 172° to RENER
- Turn LEFT, track 169° to GOSKO
IAS AT 230KT from GOSKO
- Track 169° to DUDAB
- Turn LEFT, track 107° to OBGAL
Cross OBGAL AT or ABV 3000ft
- Turn LEFT, track 070° to AKDEL
MAX IAS 185KT from AKDEL
- Track via GLS RWY 34 or RNP RWY 34

COMMUNICATIONS FAILURE: PROCEDURE IN IMC

- Squawk 7600, comply with vertical navigation requirements, but not below MSA.
- Track via the latest STAR clearance to the nominated runway, then fly the most suitable approach in accordance with ERSA EMERG Section 1.5.

Changes: WPT NAMES, VALIDITY INDICATOR.

MMLSR31-183