

**STANDARD INSTRUMENT ARRIVAL (STAR)
BOOIN ONE ALPHA ARRIVAL (RNAV) RWY 16/27
MELBOURNE, VIC (YMML)**

12 JUN 2025

ATIS 114.1 118.0	APP 132.0	TWR 120.5	SMC 121.7	Bearings are Magnetic Elevations in FEET AMSL
---------------------	--------------	--------------	--------------	--

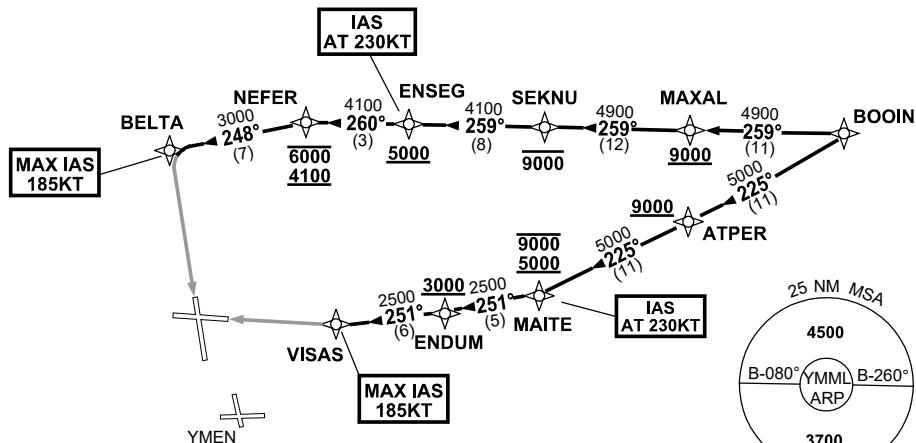
NOT TO SCALE



ATC APCH SPEEDS	
NM FM TD	SPEED KT
RWY 16 BELTA	185 -160
RWY 27 VISAS	185 -160

**SPEED
MAX IAS 250KT
BELOW 10,000ft**

RNP 1



10 NM MSA 3300

ARRIVAL: BOOIN ONE ALPHA

RWY 16:

- From BOOIN, track 259° to MAXAL
Cross MAXAL AT or ABV 9000ft
- Track 259° to SEKNU
Cross SEKNU AT or BLW 9000ft
- Track 259° to ENSEG
Cross ENSEG AT or ABV 5000ft
IAS AT 230KT from ENSEG
- Track 260° to NEFER
Cross NEFER BTN 4100ft and 6000ft
- Turn LEFT, track 248° to BELTA
MAX IAS 185KT from BELTA
- Track via GLS RWY 16 or ILS RWY 16 or RNP Z RWY 16 or LOC RWY 16

RWY 27:

- From BOOIN, track 225° to ATPER
Cross ATPER AT or ABV 9000ft
- Track 225° to MAITE
Cross MAITE BTN 5000ft and 9000ft
IAS AT 230KT from MAITE
- Turn RIGHT, track 251° to ENDUM
Cross ENDUM AT or ABV 3000ft
- Track 251° to VISAS
MAX IAS 185KT from VISAS
- Track via GLS RWY 27 or ILS RWY 27 or RNP RWY 27 or LOC RWY 27

COMMUNICATIONS FAILURE: PROCEDURE IN IMC

- Squawk 7600, comply with vertical navigation requirements, but not below MSA.
- Track via the latest STAR clearance to the nominated runway, then fly the most suitable approach in accordance with ERS A EMERG Section 1.5.

Changes: WPT NAMES, PROC IDENT.

MMLSR27-183