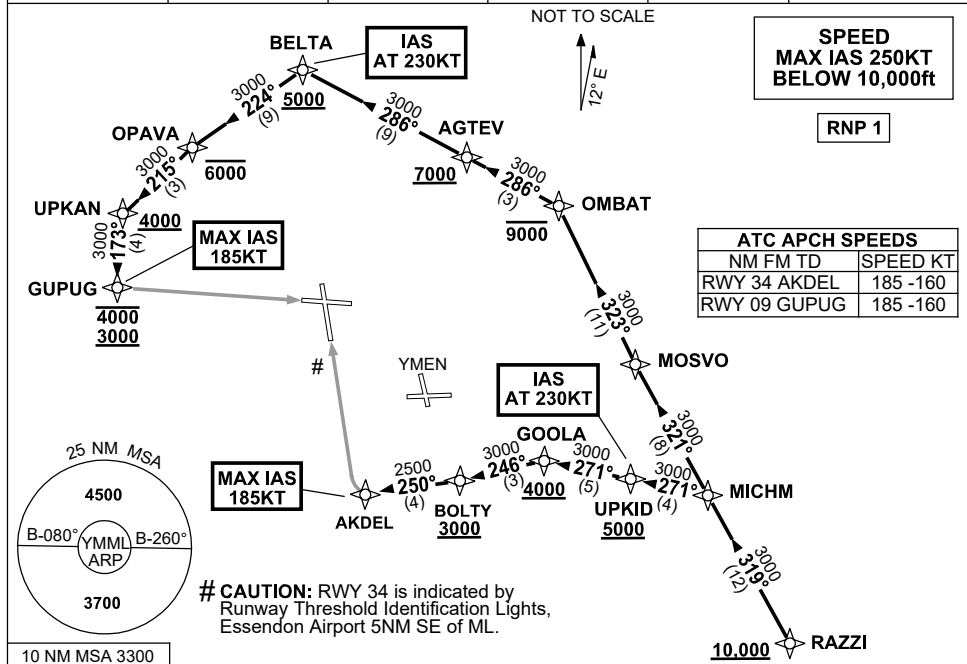


**STANDARD INSTRUMENT ARRIVAL (STAR)  
RAZZI ONE ALPHA ARRIVAL (RNAV) RWY 09/34  
MELBOURNE, VIC (YMML)**

12 JUN 2025

ATIS 114.1 118.0	APP 132.0	TWR 120.5	SMC 121.7	Bearings are Magnetic Elevations in FEET AMSL
---------------------	--------------	--------------	--------------	--



**ARRIVAL: RAZZI ONE ALPHA**

**RWY 09:**

- **Cross** RAZZI AT or ABV 10,000ft
- From RAZZI, track 319° to MICHM
- Turn **RIGHT**, track 321° to MOSVO
- Turn **RIGHT**, track 323° to OMBAT  
**Cross** OMBAT AT or BLW 9000ft
- Turn **LEFT**, track 286° to AGTEV  
**Cross** AGTEV AT or ABV 7000ft
- Track 286° to BELTA  
**Cross** BELTA AT or ABV 5000ft  
**IAS AT 230KT** from BELTA
- Turn **LEFT**, track 224° to OPAVA  
**Cross** OPAVA AT or BLW 6000ft
- Turn **LEFT**, track 215° to UPKAN  
**Cross** UPKAN AT or ABV 4000ft
- Turn **LEFT**, track 173° to GUPUG  
**Cross** GUPUG BTN 3000ft and 4000ft  
**MAX IAS 185KT** from GUPUG
- Track via GLS RWY 09 or RNP RWY 09

**RWY 34:**

- **Cross** RAZZI AT or ABV 10,000ft
- From RAZZI, track 319° to MICHM
- Turn **LEFT**, track 271° to UPKID  
**Cross** UPKID AT or ABV 5000ft  
**IAS AT 230KT** from UPKID
- Track 271° to GOOLA  
**Cross** GOOLA AT or ABV 4000ft
- Turn **LEFT**, track 246° to BOLTY  
**Cross** BOLTY AT or ABV 3000ft
- Turn **RIGHT**, track 250° to AKDEL  
**MAX IAS 185KT** from AKDEL
- Track via GLS RWY 34 or RNP RWY 34

**COMMUNICATIONS FAILURE: PROCEDURE IN IMC**

- Squawk 7600, comply with vertical navigation requirements, but not below MSA.
- Track via the latest STAR clearance to the nominated runway, then fly the most suitable approach in accordance with ERSA EMERG Section 1.5.

Changes: WPT NAMES, PROC IDENT.

MMLSR26-133