

**STANDARD INSTRUMENT ARRIVAL (STAR)
LIZZI NINE ALPHA ARRIVAL (RNAV) RWY 09/34
MELBOURNE, VIC (YMML)**

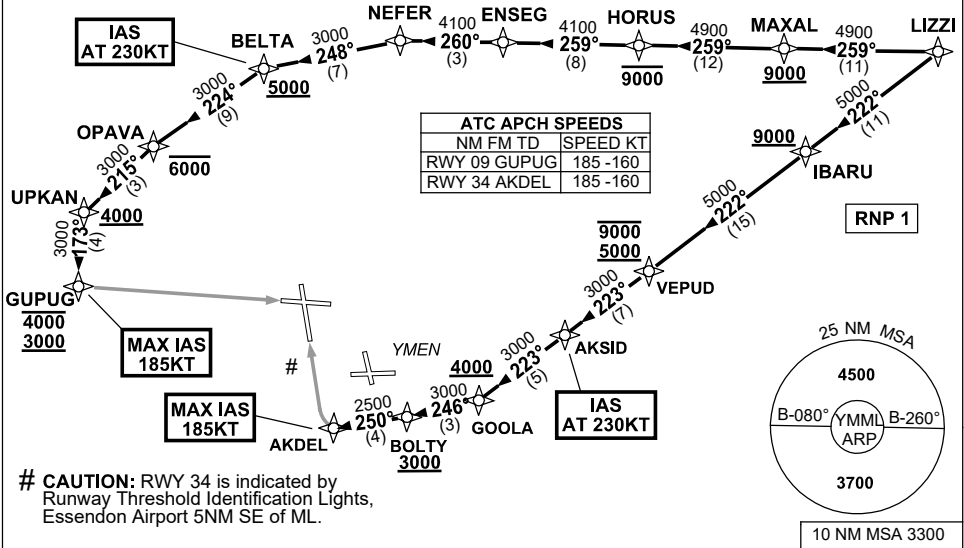
21 MAR 2024

ATIS 114.1 118.0	APP 132.0	TWR 120.5	SMC 121.7	Bearings are Magnetic Elevations in FEET AMSL
---------------------	--------------	--------------	--------------	--

NOT TO SCALE



**SPEED
MAX IAS 250KT
BELOW 10,000ft**



ARRIVAL: LIZZI NINE ALPHA

RWY 09:

- From LIZZI track 259° to MAXAL
Cross MAXAL AT or ABV 9000ft
- Track 259° to HORUS
Cross HORUS AT or BLW 9000ft
- Turn RIGHT, track 259° to ENSEG
- Track 260° to NEFER
- Turn LEFT, track 248° to BELTA
Cross BELTA AT or ABV 5000ft
IAS AT 230KT from BELTA
- Turn LEFT, track 224° to OPAVA
Cross OPAVA AT or BLW 6000ft
- Turn LEFT, track 215° to UPKAN
Cross UPKAN AT or ABV 4000ft
- Turn LEFT, track 173° to GUPUG
Cross GUPUG BTN 3000ft and 4000ft
MAX IAS 185KT from GUPUG
- Track via GLS RWY 09 or RNP RWY 09

RWY 34:

- From LIZZI track 222° to IBARU
Cross IBARU AT or ABV 9000ft
- Track 222° to VEPUD
Cross VEPUD BTN 5000ft and 9000ft
- Track 223° to AKSID
IAS AT 230KT from AKSID
- Track 223° to GOOLA
Cross GOOLA AT or ABV 4000ft
- Turn RIGHT, track 246° to BOLTY
Cross BOLTY AT or ABV 3000ft
- Turn RIGHT, track 250° to AKDEL
MAX IAS 185KT from AKDEL
- Track via GLS RWY 34 or RNP RWY 34

COMMUNICATIONS FAILURE: PROCEDURE IN IMC

- Squawk 7600, comply with vertical navigation requirements, but not below MSA.
- Track via the latest STAR clearance to the nominated runway, then fly the most suitable approach in accordance with ERS A EMERG Section 1.5.

Changes: VAR.

MMLSR25-178