

**STANDARD INSTRUMENT ARRIVAL (STAR)
BOYSE NINE ALPHA ARRIVAL (NON-JET)(RNAV) RWY 16/27
MELBOURNE, VIC (YMML)**

12 JUN 2025

ATIS 114.1 118.0	APP 132.0	TWR 120.5	SMC 121.7		Bearings are Magnetic Elevations in FEET AMSL
---------------------	--------------	--------------	--------------	--	--

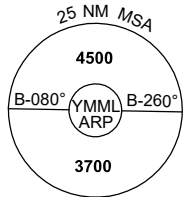
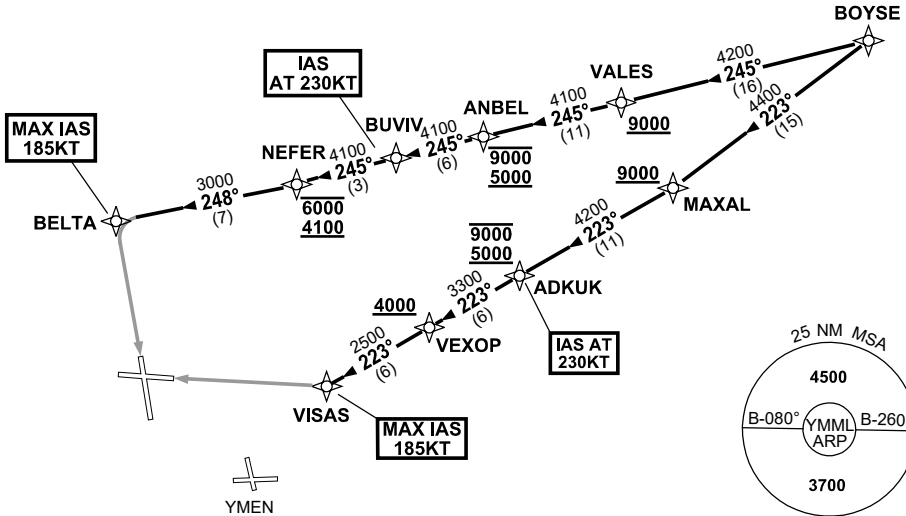
NOT TO SCALE



ATC APCH SPEEDS	
NM FM TD	SPEED KT
RWY 16 BELTA	185-160
RWY 27 VISAS	185-160

**SPEED
MAX IAS 250KT
BELOW 10,000ft**

RNP 1



10 NM MSA 3300

ARRIVAL: BOYSE NINE ALPHA (NON-JET)

RWY 16:

- From BOYSE, track 245° to VALES
Cross VALES AT or ABV 9000ft
- Track 245° to ANBEL
Cross ANBEL BTN 5000ft and 9000ft
- Track 245° to BUVIV
IAS AT 230KT from BUVIV
- Track 245° to NEFER
Cross NEFER BTN 4100ft and 6000ft
- Turn RIGHT, track 248° to BELTA
MAX IAS 185KT from BELTA
- Track via GLS RWY 16 or ILS RWY 16 or RNP Z RWY 16 or LOC RWY 16

RWY 27:

- From BOYSE, track 223° to MAXAL
Cross MAXAL AT or ABV 9000ft
- Turn RIGHT, track 223° to ADKUK
Cross ADKUK BTN 5000ft and 9000ft
IAS AT 230KT from ADKUK
- Track 223° to VEXOP
Cross VEXOP AT or ABV 4000ft
- Track 223° to VISAS
MAX IAS 185KT from VISAS
- Track via GLS RWY 27 or ILS RWY 27 or RNP RWY 27 or LOC RWY 27

COMMUNICATIONS FAILURE: PROCEDURE IN IMC

- Squawk 7600, comply with vertical navigation requirements, but not below MSA.
- Track via the latest STAR clearance to the nominated runway, then fly the most suitable approach in accordance with ERS A EMERG Section 1.5.

Changes: WPT NAMES, VALIDITY INDICATOR.

MMLSR24-183