

**STANDARD INSTRUMENT ARRIVAL (STAR)
WENDY ONE ALPHA ARRIVAL (RNAV) RWY 09/34
MELBOURNE, VIC (YMML)**

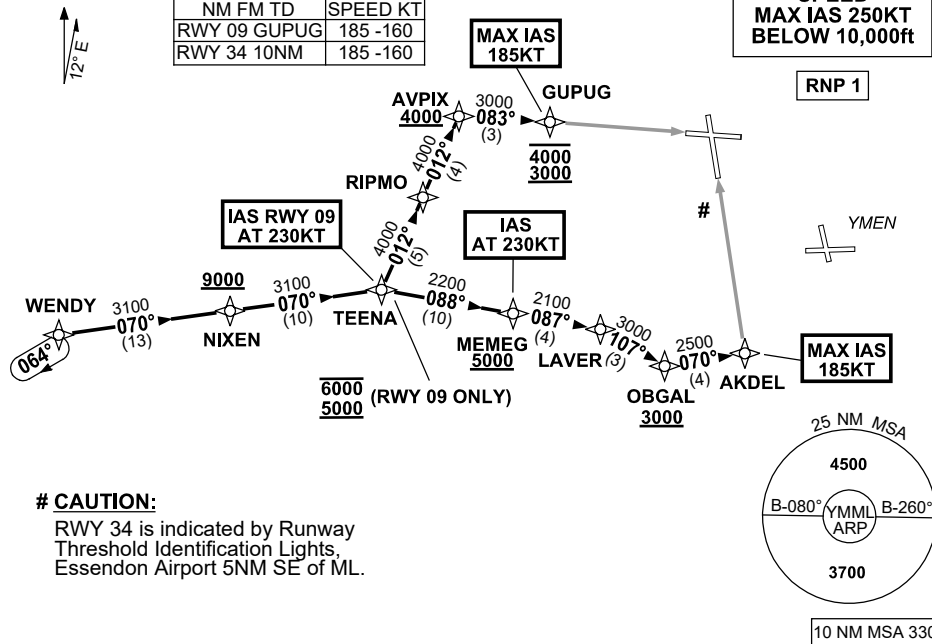
21 MAR 2024

ATIS 114.1 118.0	APP 129.4 132.0	TWR 120.5	SMC 121.7	Bearings are Magnetic Elevations in FEET AMSL
---------------------	--------------------	--------------	--------------	--

NOT TO SCALE

ATC APCH SPEEDS		
NM	FM	TD
		SPEED KT
RWY 09	GU	PUG
		185 -160
RWY 34	10	NM
		185 -160

**SPEED
MAX IAS 250KT
BELOW 10,000ft**



ARRIVAL: WENDY ONE ALPHA

RWY 09:

- From WENDY track 070° to NIXEN
Cross NIXEN AT or ABV 9000ft
- Track 070° to TEENA
Cross TEENA BTN 5000ft and 6000ft
IAS AT 230KT from TEENA
- From TEENA turn LEFT, track 012° to RIPMO
- Track 012° to AVPIX
Cross AVPIX AT or ABV 4000ft
- Turn RIGHT, track 083° to GUPUG
Cross GUPUG BTN 3000ft and 4000ft
MAX IAS 185KT from GUPUG
- Track via GLS RWY 09 or RNP RWY 09

RWY 34:

- From WENDY track 070° to NIXEN
Cross NIXEN AT or ABV 9000FT
- Track 070° to TEENA
Cross TEENA BTN 5000ft and 6000ft
- Turn RIGHT, track 088° to MEMEG
Cross MEMEG AT or ABV 5000ft
IAS AT 230KT from MEMEG
- Track 087° to LAVER
- Turn RIGHT, track 107° to OBGAL
Cross OBGAL AT or ABV 3000ft
- Turn LEFT, track 070° to AKDEL
MAX IAS 185KT from AKDEL
- Track via GLS RWY 34 or RNP RWY 34

COMMUNICATIONS FAILURE: PROCEDURE IN IMC

- Squawk 7600, comply with vertical navigation requirements, but not below MSA.
- Track via the latest STAR clearance to the nominated runway, then fly the most suitable approach in accordance with ERSA EMERG Section 1.5.

Changes: VAR.

MMLSR22-178