

**STANDARD INSTRUMENT ARRIVAL (STAR)  
WENDY ONE PAPA ARRIVAL (RNAV)  
MELBOURNE, VIC (YMML)**

21 MAR 2024

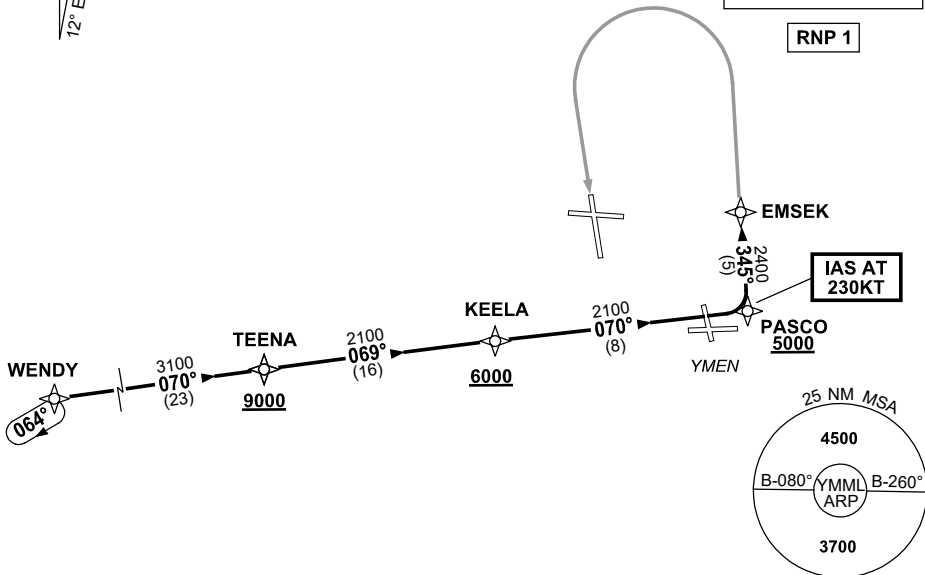
ATIS 114.1 118.0	APP 129.4 132.0	TWR 120.5	SMC 121.7		Bearings are Magnetic Elevations in FEET AMSL
---------------------	--------------------	--------------	--------------	--	--

NOT TO SCALE



**SPEED  
MAX IAS 250KT  
BELOW 10,000ft**

**RNP 1**



**ARRIVAL: WENDY ONE PAPA**

**RWY 16 :**

- From WENDY track 070° to TEENA  
**Cross** TEENA AT or ABV 9000ft
- From TEENA turn LEFT, track 069° to KEELA  
**Cross** KEELA AT or ABV 6000ft
- Track 070° to PASCO  
**Cross** PASCO AT or ABV 5000ft  
**IAS AT 230KT** from PASCO
- Turn LEFT, track 345° to EMSEK
- Track via RNP P RWY 16 (AR)

**COMMUNICATIONS FAILURE: PROCEDURE IN IMC**

- Squawk 7600, comply with vertical navigation requirements, but not below MSA.
- Track via the latest STAR clearance to the nominated runway, then fly the most suitable approach in accordance with ERSA EMERG Section 1.5.

Changes: VAR.

MMLSR21-178